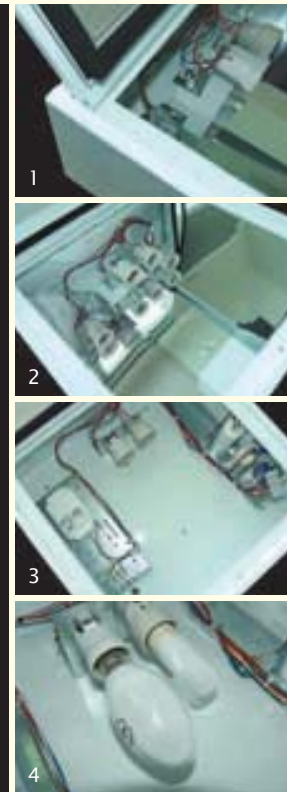
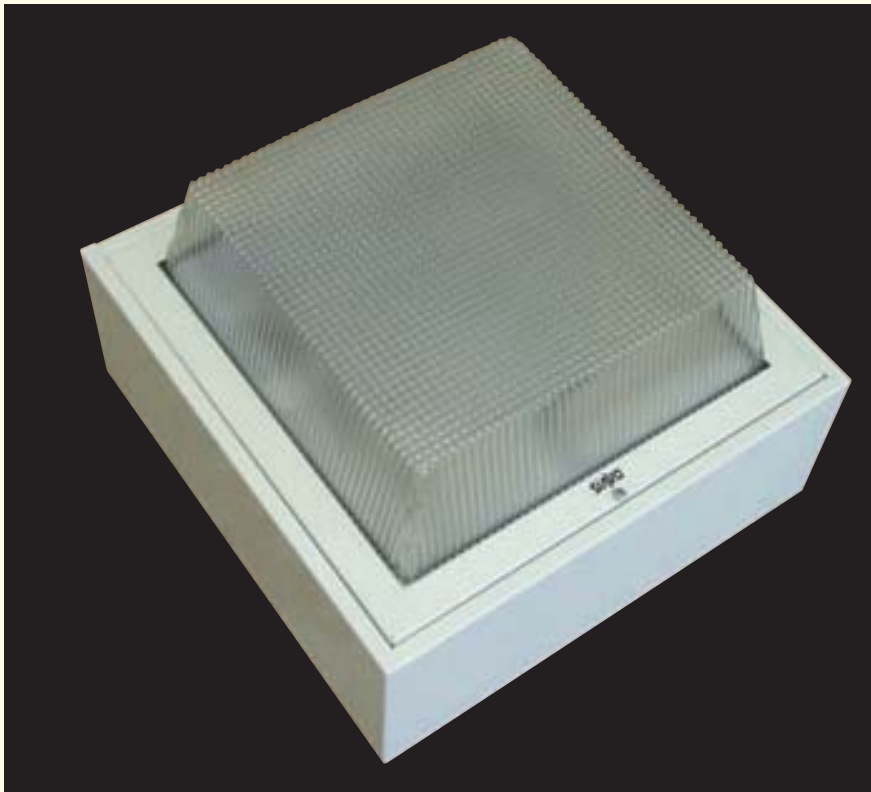


BIANCA JUNIOR - DEEP DROP DIFFUSER



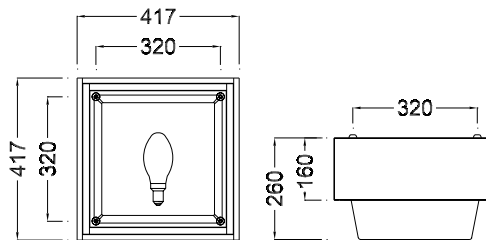
FEATURES

- 1 Neoprene rubber gasketed & hinged diffuser frame.
 - 2 Internal specular aluminium reflectors which can be individually removed for control gear access
 - 3 All control equipment is gear tray mounted. Gear trays are 1.2mm galvanized steel
 - 4 The luminaire is supplied standard with pre-wiring to allow future on site fitting of a standby relay & lamp. The luminaire may also be ordered complete with the standby relay & lamp. After switch-on, or momentary loss of supply voltage, HID lamps take several minutes before full luminous output, or re-strike is achieved. In some applications, it is important to have some degree of instant light. The function of the relay is to provide instant light from the tungsten halogen standby lamp until the HID lamp is approximately 70% - 75% of full output, at which time the relay switches off the standby lamp. This is also the case in the event of a momentary loss of supply voltage. Should the HID lamp fail to strike, the standby lamp will remain on indefinitely.
- Surface mounting luminaire. The luminaire may be recessed mounted in plaster ceilings with the use of the Davis PFBJ plaster frame.
 - Powder coated white, 1mm thick steel body and diffuser frame
 - E27 Lamp holder
 - 25mm diameter rear cable entry hole
 - UV stabilized polycarbonate deep drop diffuser
 - Optional pyramid & shallow drop diffusers available
 - Supplied with integral or optional remote control gear

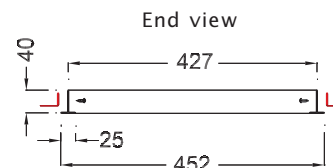
APPLICATION

- Undercover car park
- showrooms
- display areas
- multi-sports halls

DIMENSIONS



PFBJ PLASTER FRAME FOR RECESSED MODELS



cut out size 432 X 432

For mounting details see general catalogue page G1
Bianca Jr weight 9.6kg (maximum)

BIANCA JUNIOR - DEEP DROP DIFFUSER



Manufactured to standards – IEC60598.1
IEC60598.2.1
IEC60598.2.2
CISPR15



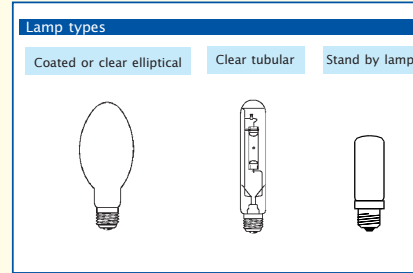
*“When your
business
depends
on light.”*

Model No.	Type
BIJS80MVD	Mercury Vapour
BIJS125MVD	Mercury Vapour
BIJS70MHD	Metal Halide
BIJS100MHD	Metal Halide
BIJS150MHD	Metal Halide
BIJS70SD	High Pressure Sodium
BIJS100SD	High Pressure Sodium

Single ended E27 lamps (BIJS100SD Single ended E40 lamp)
Stand by lamp Osram halolux 644781M 150w TH E27 coated

Options	
P	Pyramid diffuser (Replaces D in model number)
S	Shallow diffuser (Replaces D in model number)
RC	Remote Control (first suffix after model number)
TH150	150w Tungsten Halogen standby lamp & relay (second suffix after model number)

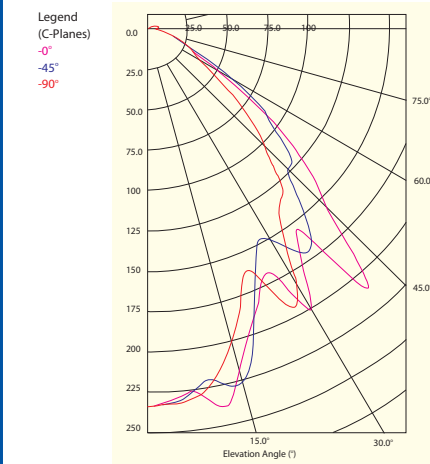
Example: BIJS150MHRCTH150



BIANCA JUNIOR HPS

70w clear lamp

POLAR CURVE
cd/1000lms 1 Max 236cd in CO plane at 10° gamma



Legend (C-Planes)
-0°
-45°
-90°

C0 Plane
C45 Plane
C90 Plane

CIE Aiming Convention
CO Plane across the lamp

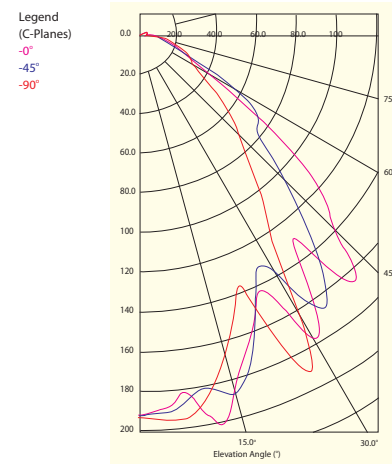
LUMINOUS INTENSITY TABLE (cd/1000lms)					
γ Gamma	C0	C22.5	C45	C67.5	C90
0.0	234	234	234	234	234
5.0	229	228	230	230	232
10.0	236	231	218	221	223
15.0	218	221	228	201	200
20.0	191	194	191	187	169
25.0	168	169	157	189	174
30.0	208	182	148	192	188
35.0	163	155	170	145	141
40.0	221	141	153	122	132
45.0	157	141	122	101	102
50.0	126	120	112	87	80
55.0	86	93	90	64	54
60.0	49	57	59	42	37
65.0	32	32	33	31	30
70.0	23	23	23	25	24
75.0	16	17	17	18	19
80.0	13	13	12	14	14
85.0	7	9	8	9	8
90.0	4	5	5	5	4

LUMINOUS OPENING: 330mm x 330mm

AVERAGE LUMINANCE TABLE			
γ Gamma	C0	C45	C90
45.0	1572	1115	1022
55.0	965	905	607
65.0	432	382	400
75.0	276	234	314
85.0	178	148	185

Luminance in cd/m²/1000lms

POLAR CURVE
cd/1000lms 1 Max 193cd in CO plane at 0° gamma



Legend (C-Planes)
-0°
-45°
-90°

C0 Plane
C45 Plane
C90 Plane

CIE Aiming Convention
CO Plane across the lamp

LUMINOUS INTENSITY TABLE (cd/1000lms)					
γ Gamma	C0	C22.5	C45	C67.5	C90
0.0	193	193	193	193	193
5.0	189	192	192	194	196
10.0	193	185	180	188	189
15.0	187	191	189	169	168
20.0	163	171	170	160	144
25.0	140	147	140	183	182
30.0	181	155	138	180	161
35.0	142	140	169	120	114
40.0	166	123	137	94	88
45.0	137	120	104	78	72
50.0	117	104	77	66	59
55.0	79	82	75	50	43
60.0	44	48	57	37	33
65.0	29	29	32	31	30
70.0	21	21	20	25	25
75.0	16	16	16	18	19
80.0	13	13	12	13	13
85.0	8	8	8	8	7
90.0	4	5	5	5	4

LUMINOUS OPENING: 330mm x 330mm

AVERAGE LUMINANCE TABLE			
γ Gamma	C0	C45	C90
45.0	1373	953	725
55.0	888	752	482
65.0	381	366	402
75.0	263	219	317
85.0	181	143	174

Luminance in cd/m²/1000lms

UTILISATION FACTOR TABLE - CIBSE TMS (fine grid method min/ave 0.8)

LOR: 52.7%			SHR NOM: 1.5 : 1.0					SHR MAX: 1.6 : 1.0				
Reflectance			Room Index (K)									
Ceiling	Walls	Floor	0.75	1.00	1.25	1.50	2.00	2.50	3.00	4.00	5.00	
0.70	0.50	0.20	0.33	0.37	0.41	0.43	0.46	0.48	0.50	0.51	0.53	
0.70	0.30	0.20	0.30	0.34	0.38	0.40	0.43	0.46	0.47	0.50	0.51	
0.70	0.10	0.20	0.27	0.31	0.35	0.38	0.41	0.44	0.46	0.48	0.50	
0.50	0.50	0.20	0.32	0.36	0.39	0.41	0.44	0.46	0.47	0.49	0.50	
0.50	0.30	0.20	0.29	0.33	0.37	0.39	0.42	0.44	0.46	0.48	0.49	
0.50	0.10	0.20	0.27	0.31	0.34	0.37	0.40	0.43	0.44	0.46	0.48	
0.30	0.50	0.20	0.31	0.35	0.38	0.40	0.43	0.44	0.46	0.47	0.48	
0.30	0.30	0.20	0.29	0.33	0.36	0.38	0.41	0.43	0.44	0.46	0.47	
0.30	0.10	0.20	0.27	0.31	0.34	0.36	0.39	0.41	0.43	0.45	0.46	
0.00	0.00	0.00	0.26	0.29	0.32	0.35	0.37	0.39	0.41	0.42	0.43	
Distribution Factors	Floor:		0.26	0.29	0.32	0.35	0.37	0.39	0.41	0.42	0.43	
	Walls:		0.23	0.20	0.17	0.14	0.12	0.10	0.08	0.07	0.05	
	Ceiling:		0.02	0.02	0.02	0.02	0.02	0.02	0.02	0.02	0.02	
Bz Numbers			2	3	3	3	3	3	3	3	3	

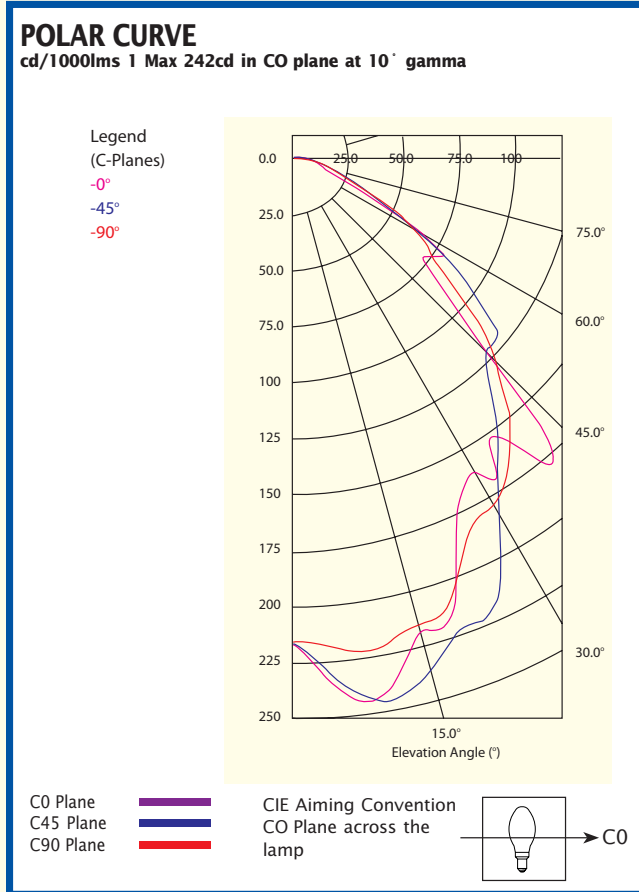
UTILISATION FACTOR TABLE - CIBSE TMS (fine grid method min/ave 0.8)

LOR: 47.1%			SHR NOM: 1.5 : 1.0					SHR MAX: 1.55 : 1.0				
Reflectance			Room Index (K)									
Ceiling	Walls	Floor	0.75	1.00	1.25	1.50	2.00	2.50	3.00	4.00	5.00	
0.70	0.50	0.20	0.29	0.32	0.35	0.37	0.40	0.42	0.43	0.45	0.46	
0.70	0.30	0.20	0.26	0.29	0.33	0.35	0.38	0.40	0.41	0.43	0.44	
0.70	0.10	0.20	0.24	0.27	0.30	0.33	0.36	0.38	0.39	0.42	0.43	
0.50	0.50	0.20	0.28	0.31	0.34	0.36	0.38	0.40	0.41	0.43	0.44	
0.50	0.30	0.20	0.26	0.29	0.32	0.34	0.36	0.38	0.40	0.41	0.42	
0.50	0.10	0.20	0.24	0.27	0.30	0.32	0.35	0.37	0.38	0.40	0.42	
0.30	0.50	0.20	0.27	0.30	0.33	0.35	0.37	0.38	0.39	0.41	0.42	
0.30	0.30	0.20	0.25	0.28	0.31	0.33	0.35	0.37	0.38	0.40	0.41	
0.30	0.10	0.20	0.23	0.27	0.29	0.31	0.34	0.36	0.37	0.39	0.40	
0.00	0.00	0.00	0.22	0.25	0.28	0.30	0.32	0.34	0.35	0.37	0.38	
Distribution Factors	Floor:		0.22	0.25	0.28	0.30	0.32	0.34	0.35	0.37	0.38	
	Walls:		0.20	0.17	0.14	0.13	0.10	0.08	0.07	0.06	0.05	
	Ceiling:		0.01	0.01	0.01	0.01	0.01	0.01	0.01	0.01	0.01	
Bz Numbers			2	3	3	3	3	3	3	3	3	

BIANCA JUNIOR IN STAND BY MODE

150w tungsten halogen coated lamp

Osram Halolux 644781M. Luminous flux 2400 lumens.



LUMINOUS INTENSITY TABLE (cd/1000lms)

γ Gamma	C0	C22.5	C45	C67.5	C90
0.0	215	215	215	215	215
5.0	238	237	234	227	219
10.0	242	244	246	236	222
15.0	217	224	237	236	214
20.0	213	223	222	232	208
25.0	172	188	217	211	184
30.0	160	171	184	199	178
35.0	150	166	159	186	167
40.0	181	152	138	162	151
45.0	121	142	121	139	127
50.0	84	83	120	110	101
55.0	75	65	92	78	76
60.0	65	71	63	62	63
65.0	32	48	43	44	42
70.0	19	25	28	25	24
75.0	13	16	16	20	18
80.0	12	12	11	15	14
85.0	9	9	8	10	9
90.0	6	7	6	7	5

LUMINOUS OPENING: 330mm x 330mm

AVERAGE LUMINANCE TABLE

γ Gamma	C0	C45	C90
45.0	1569	1571	1651
55.0	1205	1469	1209
65.0	697	932	911
75.0	478	575	652
85.0	980	895	929

Luminance in cd/m²/1000lms

UTILISATION FACTOR TABLE - CIBSE TM5 (fine grid method min/ave 0.8)

LOR: 47.7%				SHR NOM: 1.25 : 1.0				SHR MAX: 1.37 : 1.0			
Reflectance			Room Index (K)								
Ceiling	Walls	Floor	0.75	1.00	1.25	1.50	2.00	2.50	3.00	4.00	5.00
0.70	0.50	0.20	0.30	0.35	0.38	0.40	0.44	0.46	0.47	0.49	0.50
0.70	0.30	0.20	0.27	0.32	0.35	0.38	0.41	0.43	0.45	0.47	0.48
0.70	0.10	0.20	0.25	0.29	0.33	0.35	0.39	0.41	0.43	0.46	0.47
0.50	0.50	0.20	0.30	0.34	0.37	0.39	0.42	0.44	0.45	0.47	0.48
0.50	0.30	0.20	0.27	0.31	0.34	0.37	0.40	0.42	0.43	0.45	0.47
0.50	0.10	0.20	0.24	0.29	0.32	0.35	0.38	0.40	0.42	0.44	0.46
0.30	0.50	0.20	0.29	0.33	0.36	0.38	0.41	0.42	0.43	0.45	0.46
0.30	0.30	0.20	0.26	0.31	0.34	0.36	0.39	0.41	0.42	0.44	0.45
0.30	0.10	0.20	0.24	0.29	0.32	0.34	0.37	0.39	0.41	0.43	0.44
0.00	0.00	0.00	0.23	0.28	0.31	0.33	0.36	0.37	0.39	0.41	0.42
Distribution Factors	Floor:		0.23	0.28	0.31	0.33	0.36	0.37	0.39	0.41	0.42
	Walls:		0.24	0.19	0.16	0.14	0.11	0.10	0.08	0.06	0.05
	Ceiling:		0.01	0.01	0.01	0.01	0.01	0.01	0.01	0.01	0.01
Bz Numbers			3	3	3	3	3	3	3	3	3

MALAYSIA KUALA LUMPUR Sales Office: Tel:(03) 5636 4348 Fax:(03) 5636 4352 **PENANG** Sales Office: Tel:(04) 507 0580

Fax:(04) 507 0968 **SINGAPORE** Sales Office: Tel: 6745 2511 Fax: 6745 5828 **AUSTRALIA** Sales ENQUIRIES ALL STATES:

Tel: 1300 851 001 **NEW ZEALAND** AUCKLAND Sales Office (09) 2710204 Fax: (09) 2713144

Distributors in: Pacific Islands, New Zealand, United Kingdom, Vietnam, Thailand, Indonesia, Bangladesh, Sri Lanka

Lighting designs on request
 IES files on request or available on Davis website

Website: www.davislighting.com

Email: sales@davislighting.com

Davis Lighting is a registered trade name

Davis Lighting reserves the right to change specifications and materials without prior notice.
 Materials and components may vary from region to region.



*"When your
 business
 depends
 on light."*