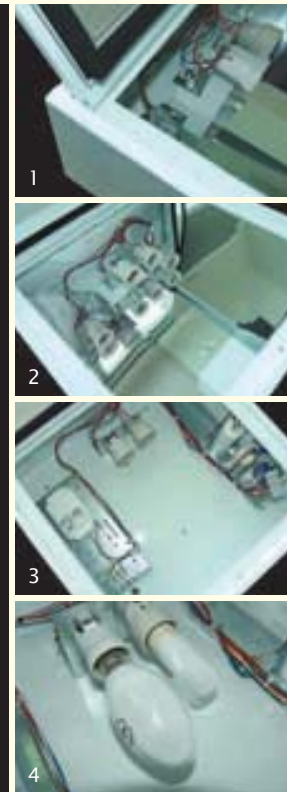
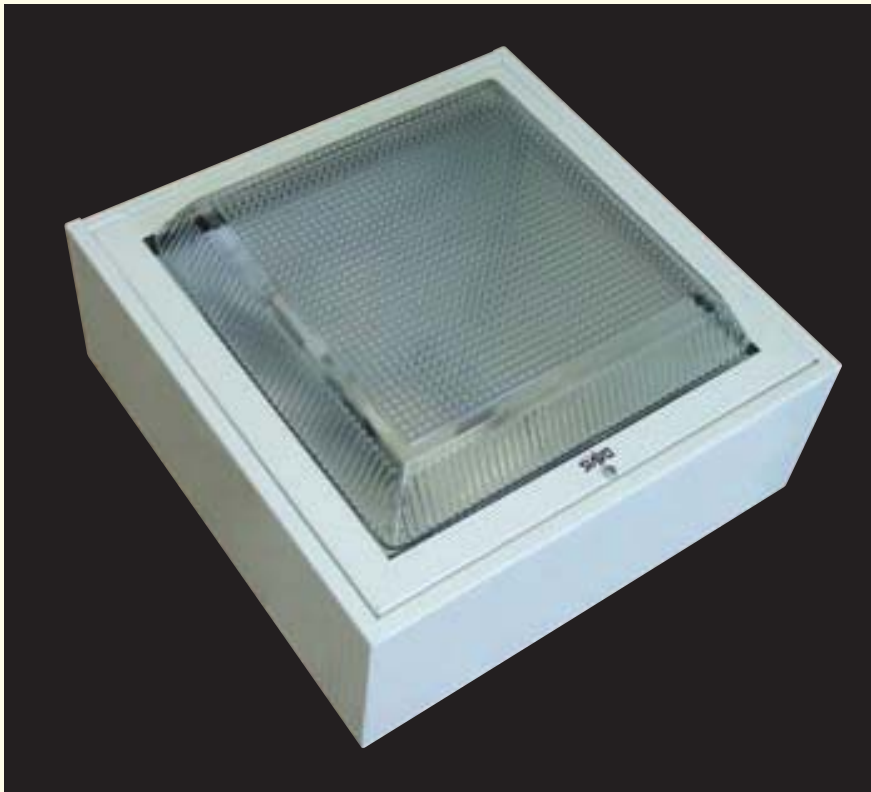


# BIANCA JUNIOR - SHALLOW DROP DIFFUSER



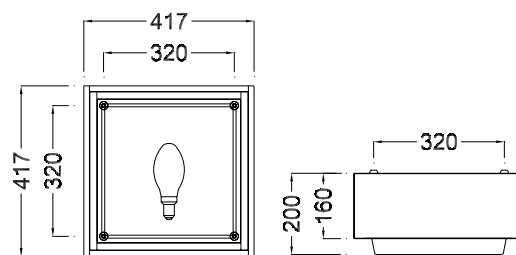
## FEATURES

- 1 Neoprene rubber gasketed & hinged diffuser frame.
  - 2 Internal specular aluminium reflectors which can be individually removed for control gear access
  - 3 All control equipment is gear tray mounted. Gear trays are 1.2mm galvanized steel
  - 4 The luminaire is supplied standard with pre-wiring to allow future on site fitting of a standby relay & lamp. The luminaire may also be ordered complete with the standby relay & lamp. After switch-on, or momentary loss of supply voltage, HID lamps take several minutes before full luminous output, or re-strike is achieved. In some applications, it is important to have some degree of instant light. The function of the relay is to provide instant light from the tungsten halogen standby lamp until the HID lamp is approximately 70% - 75% of full output, at which time the relay switches off the standby lamp. This is also the case in the event of a momentary loss of supply voltage. Should the HID lamp fail to strike, the standby lamp will remain on indefinitely.
- Surface mounting luminaire. The luminaire may be recessed mounted in plaster ceilings with the use of the Davis PFBJ plaster frame.
  - Powder coated white, 1mm thick steel body and diffuser frame
  - E27 Lamp holder
  - 25mm diameter rear cable entry hole
  - UV stabilized polycarbonate shallow drop diffuser
  - Optional pyramid & deep drop diffusers available
  - Supplied with integral or optional remote control gear

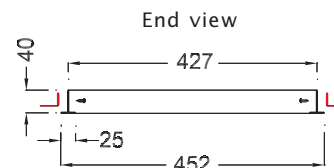
## APPLICATION

- Undercover car park
- showrooms
- display areas
- multi-sports halls

## DIMENSIONS



## PFBJ PLASTER FRAME FOR RECESSED MODELS



cut out size 432 X 432

For mounting details see general catalogue page G1  
Bianca Jr weight 9.6kg (maximum)

BIANCA JUNIOR - SHALLOW DROP DIFFUSER



Manufactured to standards – IEC60598.1  
IEC60598.2.1  
IEC60598.2.2  
CISPR15



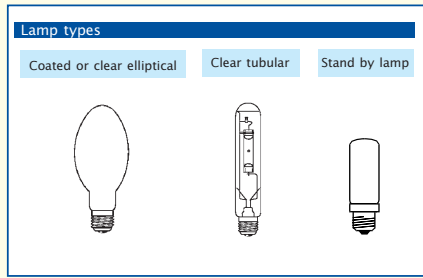
“When your  
business  
depends  
on light.”

| Model No.  | Type                 |
|------------|----------------------|
| BIJS80MVS  | Mercury Vapour       |
| BIJS125MVS | Mercury Vapour       |
| BIJS70MHS  | Metal Halide         |
| BIJS100MHS | Metal Halide         |
| BIJS150MHS | Metal Halide         |
| BIJS70SS   | High Pressure Sodium |
| BIJS100SS  | High Pressure Sodium |

Single ended E27 lamps (BIJS100SS Single ended E40 lamp)  
Stand by lamp Osram halolux 644781M 150w TH E27 coated

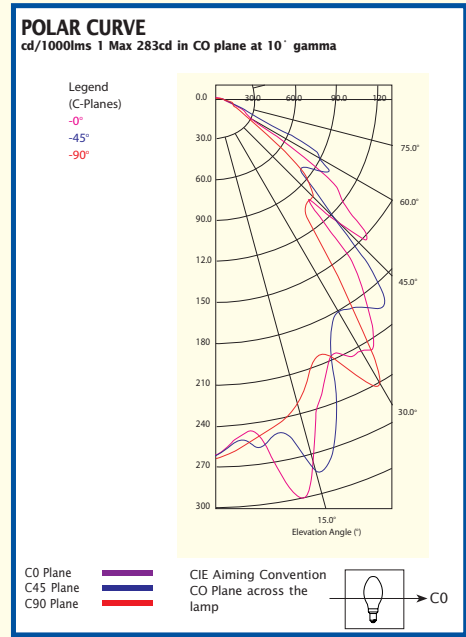
| Options |                                                                               |
|---------|-------------------------------------------------------------------------------|
| P       | Pyramid diffuser (Replaces S in model number)                                 |
| D       | Deep drop diffuser (Replaces S in model number)                               |
| RC      | Remote Control (first suffix after model number)                              |
| TH150   | 150w Tungsten Halogen standby lamp & relay (second suffix after model number) |

**Example: BIJS150MHRCTH150**



## BIANCA JUNIOR HPS

70w clear lamp



| LUMINOUS INTENSITY TABLE (cd/1000lms) |     |       |     |       |     |
|---------------------------------------|-----|-------|-----|-------|-----|
| γ Gamma                               | C0  | C22.5 | C45 | C67.5 | C90 |
| 0.0                                   | 264 | 264   | 264 | 264   | 264 |
| 5.0                                   | 246 | 239   | 249 | 249   | 255 |
| 10.0                                  | 283 | 267   | 248 | 242   | 244 |
| 15.0                                  | 278 | 288   | 287 | 267   | 232 |
| 20.0                                  | 229 | 225   | 260 | 222   | 206 |
| 25.0                                  | 203 | 198   | 197 | 216   | 210 |
| 30.0                                  | 212 | 185   | 178 | 240   | 248 |
| 35.0                                  | 200 | 199   | 185 | 203   | 148 |
| 40.0                                  | 162 | 147   | 197 | 112   | 103 |
| 45.0                                  | 139 | 76    | 115 | 94    | 103 |
| 50.0                                  | 124 | 136   | 80  | 93    | 84  |
| 55.0                                  | 106 | 109   | 91  | 67    | 46  |
| 60.0                                  | 30  | 42    | 87  | 30    | 26  |
| 65.0                                  | 24  | 28    | 49  | 20    | 17  |
| 70.0                                  | 17  | 13    | 12  | 15    | 14  |
| 75.0                                  | 10  | 10    | 9   | 12    | 13  |
| 80.0                                  | 8   | 9     | 7   | 9     | 10  |
| 85.0                                  | 5   | 6     | 7   | 5     | 5   |
| 90.0                                  | 3   | 4     | 5   | 7     | 4   |

LUMINOUS OPENING: 330mm x 330mm

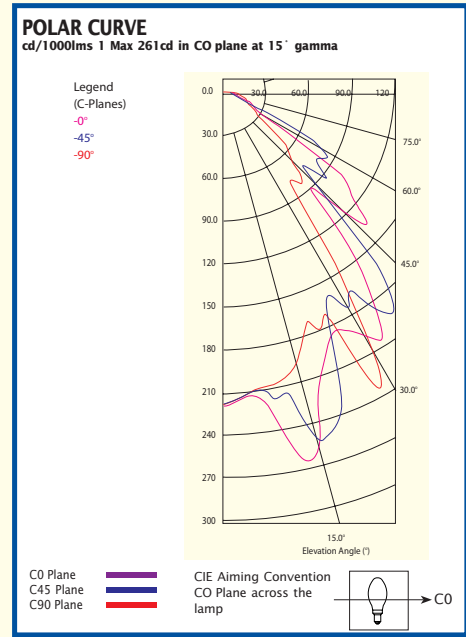
| AVERAGE LUMINANCE TABLE |      |      |      |
|-------------------------|------|------|------|
| γ Gamma                 | C0   | C45  | C90  |
| 45.0                    | 1571 | 1228 | 1162 |
| 55.0                    | 1394 | 1111 | 610  |
| 65.0                    | 386  | 722  | 279  |
| 75.0                    | 225  | 182  | 300  |
| 85.0                    | 208  | 220  | 184  |

Luminance in cd/m<sup>2</sup>/1000lms

## BIANCA JUNIOR METAL HALIDE

70w, 100w, 150w clear lamp

Photometric data applies to all three models



| LUMINOUS INTENSITY TABLE (cd/1000lms) |     |       |     |       |     |
|---------------------------------------|-----|-------|-----|-------|-----|
| γ Gamma                               | C0  | C22.5 | C45 | C67.5 | C90 |
| 0.0                                   | 221 | 221   | 221 | 221   | 221 |
| 5.0                                   | 213 | 208   | 210 | 213   | 211 |
| 10.0                                  | 245 | 219   | 220 | 206   | 208 |
| 15.0                                  | 261 | 257   | 257 | 213   | 198 |
| 20.0                                  | 202 | 196   | 242 | 187   | 169 |
| 25.0                                  | 183 | 176   | 167 | 181   | 162 |
| 30.0                                  | 195 | 165   | 180 | 244   | 212 |
| 35.0                                  | 183 | 189   | 189 | 154   | 87  |
| 40.0                                  | 128 | 125   | 184 | 79    | 84  |
| 45.0                                  | 118 | 85    | 90  | 77    | 69  |
| 50.0                                  | 121 | 124   | 99  | 70    | 57  |
| 55.0                                  | 106 | 106   | 78  | 43    | 31  |
| 60.0                                  | 29  | 42    | 79  | 26    | 25  |
| 65.0                                  | 23  | 27    | 37  | 20    | 19  |
| 70.0                                  | 15  | 13    | 12  | 16    | 17  |
| 75.0                                  | 9   | 10    | 9   | 13    | 15  |
| 80.0                                  | 8   | 9     | 7   | 10    | 11  |
| 85.0                                  | 6   | 6     | 7   | 5     | 5   |
| 90.0                                  | 3   | 3     | 6   | 6     | 4   |

LUMINOUS OPENING: 330mm x 330mm

| AVERAGE LUMINANCE TABLE |      |     |     |
|-------------------------|------|-----|-----|
| γ Gamma                 | C0   | C45 | C90 |
| 45.0                    | 1329 | 967 | 781 |
| 55.0                    | 1389 | 955 | 409 |
| 65.0                    | 374  | 550 | 314 |
| 75.0                    | 211  | 182 | 348 |
| 85.0                    | 220  | 205 | 193 |

Luminance in cd/m<sup>2</sup>/1000lms

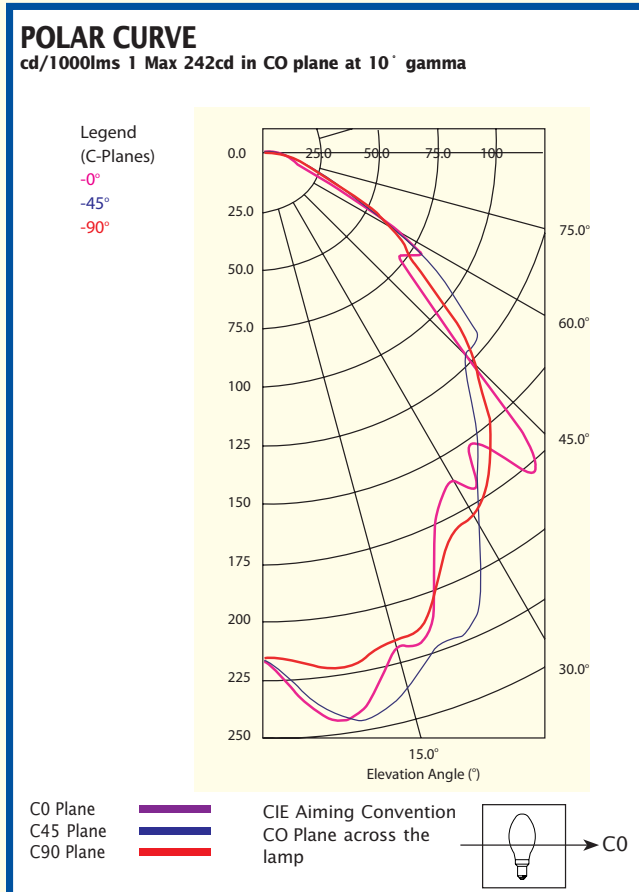
| UTILISATION FACTOR TABLE - CIBSE TMS (fine grid method min/ave 0.8) |          |       |                     |      |      |      |      |                     |      |      |      |
|---------------------------------------------------------------------|----------|-------|---------------------|------|------|------|------|---------------------|------|------|------|
| LOR: 53.9%                                                          |          |       | SHR NOM: 1.25 : 1.0 |      |      |      |      | SHR MAX: 1.42 : 1.0 |      |      |      |
| Reflectance                                                         |          |       | Room Index (K)      |      |      |      |      |                     |      |      |      |
| Ceiling                                                             | Walls    | Floor | 0.75                | 1.00 | 1.25 | 1.50 | 2.00 | 2.50                | 3.00 | 4.00 | 5.00 |
| 0.70                                                                | 0.50     | 0.20  | 0.35                | 0.40 | 0.44 | 0.46 | 0.50 | 0.52                | 0.53 | 0.55 | 0.56 |
| 0.70                                                                | 0.30     | 0.20  | 0.32                | 0.37 | 0.41 | 0.44 | 0.47 | 0.50                | 0.51 | 0.54 | 0.55 |
| 0.70                                                                | 0.10     | 0.20  | 0.29                | 0.35 | 0.38 | 0.41 | 0.45 | 0.48                | 0.50 | 0.52 | 0.54 |
| 0.50                                                                | 0.50     | 0.20  | 0.34                | 0.39 | 0.43 | 0.45 | 0.48 | 0.50                | 0.51 | 0.53 | 0.54 |
| 0.50                                                                | 0.30     | 0.20  | 0.31                | 0.36 | 0.40 | 0.43 | 0.46 | 0.48                | 0.50 | 0.52 | 0.53 |
| 0.50                                                                | 0.10     | 0.20  | 0.29                | 0.34 | 0.38 | 0.41 | 0.44 | 0.47                | 0.48 | 0.51 | 0.52 |
| 0.30                                                                | 0.50     | 0.20  | 0.34                | 0.38 | 0.42 | 0.44 | 0.47 | 0.48                | 0.50 | 0.51 | 0.52 |
| 0.30                                                                | 0.30     | 0.20  | 0.31                | 0.36 | 0.39 | 0.42 | 0.45 | 0.47                | 0.48 | 0.50 | 0.51 |
| 0.30                                                                | 0.10     | 0.20  | 0.29                | 0.34 | 0.37 | 0.40 | 0.43 | 0.45                | 0.47 | 0.49 | 0.50 |
| 0.00                                                                | 0.00     | 0.00  | 0.28                | 0.33 | 0.36 | 0.38 | 0.41 | 0.43                | 0.45 | 0.47 | 0.48 |
| Distribution Factors                                                | Floor:   |       | 0.28                | 0.33 | 0.36 | 0.38 | 0.41 | 0.43                | 0.45 | 0.47 | 0.48 |
|                                                                     | Walls:   |       | 0.25                | 0.20 | 0.16 | 0.14 | 0.11 | 0.09                | 0.07 | 0.06 | 0.04 |
|                                                                     | Ceiling: |       | 0.01                | 0.01 | 0.01 | 0.01 | 0.01 | 0.01                | 0.01 | 0.01 | 0.01 |
| Bz Numbers                                                          |          |       | 2                   | 2    | 2    | 2    | 2    | 2                   | 2    | 2    | 2    |

| UTILISATION FACTOR TABLE - CIBSE TMS (fine grid method min/ave 0.8) |          |       |                     |      |      |      |      |                     |      |      |      |
|---------------------------------------------------------------------|----------|-------|---------------------|------|------|------|------|---------------------|------|------|------|
| LOR: 50.3%                                                          |          |       | SHR NOM: 1.25 : 1.0 |      |      |      |      | SHR MAX: 1.45 : 1.0 |      |      |      |
| Reflectance                                                         |          |       | Room Index (K)      |      |      |      |      |                     |      |      |      |
| Ceiling                                                             | Walls    | Floor | 0.75                | 1.00 | 1.25 | 1.50 | 2.00 | 2.50                | 3.00 | 4.00 | 5.00 |
| 0.70                                                                | 0.50     | 0.20  | 0.31                | 0.36 | 0.39 | 0.41 | 0.44 | 0.40                | 0.47 | 0.49 | 0.50 |
| 0.70                                                                | 0.30     | 0.20  | 0.28                | 0.33 | 0.36 | 0.35 | 0.41 | 0.44                | 0.45 | 0.47 | 0.48 |
| 0.70                                                                | 0.10     | 0.20  | 0.26                | 0.30 | 0.34 | 0.36 | 0.40 | 0.42                | 0.44 | 0.46 | 0.47 |
| 0.50                                                                | 0.50     | 0.20  | 0.30                | 0.35 | 0.38 | 0.40 | 0.42 | 0.44                | 0.45 | 0.47 | 0.48 |
| 0.50                                                                | 0.30     | 0.20  | 0.27                | 0.32 | 0.35 | 0.37 | 0.40 | 0.42                | 0.44 | 0.46 | 0.47 |
| 0.50                                                                | 0.10     | 0.20  | 0.25                | 0.30 | 0.33 | 0.36 | 0.39 | 0.41                | 0.42 | 0.44 | 0.46 |
| 0.30                                                                | 0.50     | 0.20  | 0.30                | 0.34 | 0.37 | 0.38 | 0.41 | 0.42                | 0.44 | 0.45 | 0.46 |
| 0.30                                                                | 0.30     | 0.20  | 0.27                | 0.32 | 0.35 | 0.37 | 0.39 | 0.41                | 0.42 | 0.44 | 0.45 |
| 0.30                                                                | 0.10     | 0.20  | 0.25                | 0.30 | 0.33 | 0.35 | 0.38 | 0.40                | 0.41 | 0.43 | 0.44 |
| 0.00                                                                | 0.00     | 0.00  | 0.24                | 0.29 | 0.32 | 0.34 | 0.36 | 0.38                | 0.39 | 0.41 | 0.42 |
| Distribution Factors                                                | Floor:   |       | 0.24                | 0.29 | 0.32 | 0.34 | 0.36 | 0.38                | 0.39 | 0.41 | 0.42 |
|                                                                     | Walls:   |       | 0.22                | 0.18 | 0.15 | 0.13 | 0.10 | 0.08                | 0.07 | 0.05 | 0.04 |
|                                                                     | Ceiling: |       | 0.01                | 0.01 | 0.01 | 0.01 | 0.01 | 0.01                | 0.01 | 0.01 | 0.01 |
| Bz Numbers                                                          |          |       | 2                   | 2    | 2    | 2    | 2    | 2                   | 2    | 2    | 2    |

# BIANCA JUNIOR IN STAND BY MODE

150w tungsten halogen coated lamp

Osram Halolux 644781M. Luminous flux 2400 lumens.



### LUMINOUS INTENSITY TABLE (cd/1000lms)

| γ Gamma | C0  | C22.5 | C45 | C67.5 | C90 |
|---------|-----|-------|-----|-------|-----|
| 0.0     | 215 | 215   | 215 | 215   | 215 |
| 5.0     | 238 | 237   | 234 | 227   | 219 |
| 10.0    | 242 | 244   | 246 | 236   | 222 |
| 15.0    | 217 | 224   | 237 | 236   | 214 |
| 20.0    | 213 | 223   | 222 | 232   | 208 |
| 25.0    | 172 | 188   | 217 | 211   | 184 |
| 30.0    | 160 | 171   | 184 | 199   | 178 |
| 35.0    | 150 | 166   | 159 | 186   | 167 |
| 40.0    | 181 | 152   | 138 | 162   | 151 |
| 45.0    | 121 | 142   | 121 | 139   | 127 |
| 50.0    | 84  | 83    | 120 | 110   | 101 |
| 55.0    | 75  | 65    | 92  | 78    | 76  |
| 60.0    | 65  | 71    | 63  | 62    | 63  |
| 65.0    | 32  | 48    | 43  | 44    | 42  |
| 70.0    | 19  | 25    | 28  | 25    | 24  |
| 75.0    | 13  | 16    | 16  | 20    | 18  |
| 80.0    | 12  | 12    | 11  | 15    | 14  |
| 85.0    | 9   | 9     | 8   | 10    | 9   |
| 90.0    | 6   | 7     | 6   | 7     | 5   |

LUMINOUS OPENING: 330mm x 330mm

### AVERAGE LUMINANCE TABLE

| γ Gamma | C0   | C45  | C90  |
|---------|------|------|------|
| 45.0    | 1569 | 1571 | 1651 |
| 55.0    | 1205 | 1469 | 1209 |
| 65.0    | 697  | 932  | 911  |
| 75.0    | 478  | 575  | 652  |
| 85.0    | 980  | 895  | 929  |

Luminance in cd/m<sup>2</sup>/1000lms

### UTILISATION FACTOR TABLE - CIBSE TM5 (fine grid method min/ave 0.8)

| LOR: 47.7%           |          |       |                | SHR NOM: 1.25 : 1.0 |      |      |      | SHR MAX: 1.37 : 1.0 |      |      |      |
|----------------------|----------|-------|----------------|---------------------|------|------|------|---------------------|------|------|------|
| Reflectance          |          |       | Room Index (K) |                     |      |      |      |                     |      |      |      |
| Ceiling              | Walls    | Floor | 0.75           | 1.00                | 1.25 | 1.50 | 2.00 | 2.50                | 3.00 | 4.00 | 5.00 |
| 0.70                 | 0.50     | 0.20  | 0.30           | 0.35                | 0.38 | 0.40 | 0.44 | 0.46                | 0.47 | 0.49 | 0.50 |
| 0.70                 | 0.30     | 0.20  | 0.27           | 0.32                | 0.35 | 0.38 | 0.41 | 0.43                | 0.45 | 0.47 | 0.48 |
| 0.70                 | 0.10     | 0.20  | 0.25           | 0.29                | 0.33 | 0.35 | 0.39 | 0.41                | 0.43 | 0.46 | 0.47 |
| 0.50                 | 0.50     | 0.20  | 0.30           | 0.34                | 0.37 | 0.39 | 0.42 | 0.44                | 0.45 | 0.47 | 0.48 |
| 0.50                 | 0.30     | 0.20  | 0.27           | 0.31                | 0.34 | 0.37 | 0.40 | 0.42                | 0.43 | 0.45 | 0.47 |
| 0.50                 | 0.10     | 0.20  | 0.24           | 0.29                | 0.32 | 0.35 | 0.38 | 0.40                | 0.42 | 0.44 | 0.46 |
| 0.30                 | 0.50     | 0.20  | 0.29           | 0.33                | 0.36 | 0.38 | 0.41 | 0.42                | 0.43 | 0.45 | 0.46 |
| 0.30                 | 0.30     | 0.20  | 0.26           | 0.31                | 0.34 | 0.36 | 0.39 | 0.41                | 0.42 | 0.44 | 0.45 |
| 0.30                 | 0.10     | 0.20  | 0.24           | 0.29                | 0.32 | 0.34 | 0.37 | 0.39                | 0.41 | 0.43 | 0.44 |
| 0.00                 | 0.00     | 0.00  | 0.23           | 0.28                | 0.31 | 0.33 | 0.36 | 0.37                | 0.39 | 0.41 | 0.42 |
| Distribution Factors | Floor:   |       | 0.23           | 0.28                | 0.31 | 0.33 | 0.36 | 0.37                | 0.39 | 0.41 | 0.42 |
|                      | Walls:   |       | 0.24           | 0.19                | 0.16 | 0.14 | 0.11 | 0.10                | 0.08 | 0.06 | 0.05 |
|                      | Ceiling: |       | 0.01           | 0.01                | 0.01 | 0.01 | 0.01 | 0.01                | 0.01 | 0.01 | 0.01 |
| Bz Numbers           |          |       | 3              | 3                   | 3    | 3    | 3    | 3                   | 3    | 3    | 3    |

**MALAYSIA** KUALA LUMPUR Sales Office: Tel:(03) 5636 4348 Fax:(03) 5636 4352 **PENANG** Sales Office: Tel:(04) 507 0580

Fax:(04) 507 0968 **SINGAPORE** Sales Office: Tel: 6745 2511 Fax: 6745 5828 **AUSTRALIA** Sales ENQUIRIES ALL STATES:

Tel: 1300 851 001 **NEW ZEALAND** AUCKLAND Sales Office (09) 2710204 Fax: (09) 2713144

Distributors in: Pacific Islands, New Zealand, United Kingdom, Vietnam, Thailand, Indonesia, Bangladesh, Sri Lanka

Lighting designs on request  
 IES files on request or available on Davis website

Website: [www.davislighting.com](http://www.davislighting.com)

Email: [sales@davislighting.com](mailto:sales@davislighting.com)

Davis Lighting is a registered trade name

Davis Lighting reserves the right to change specifications and materials without prior notice.  
 Materials and components may vary from region to region.



*"When your  
 business  
 depends  
 on light."*