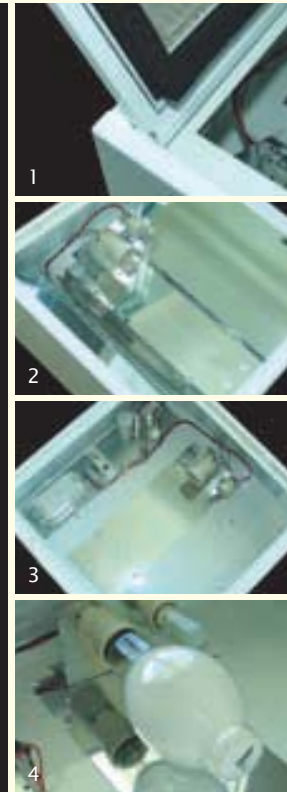
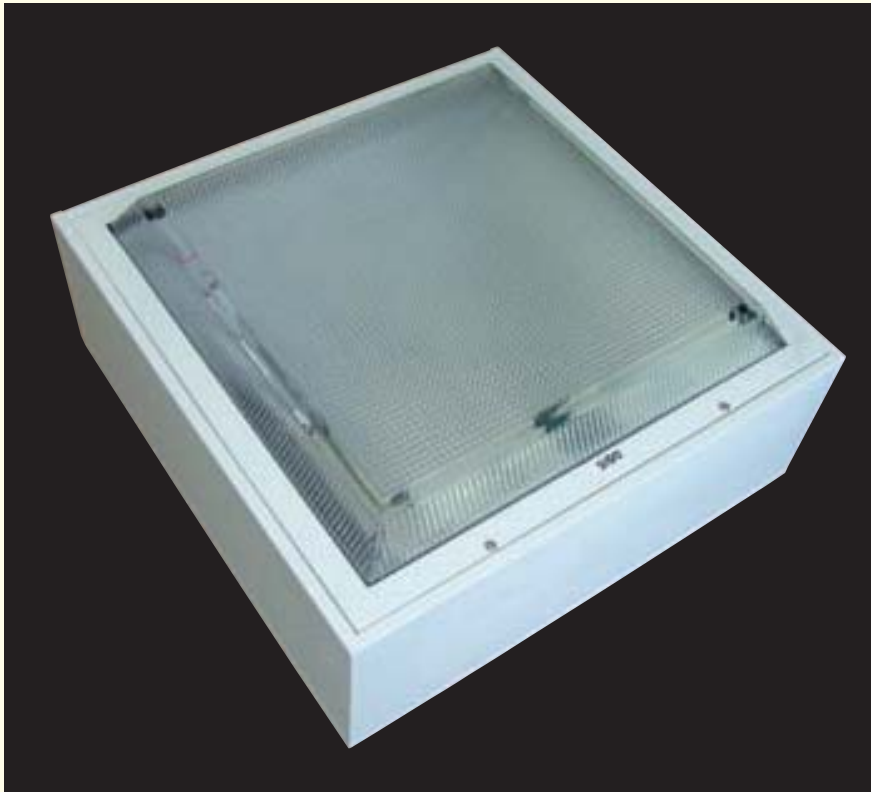


BIANCA SENIOR - SHALLOW DROP DIFFUSER



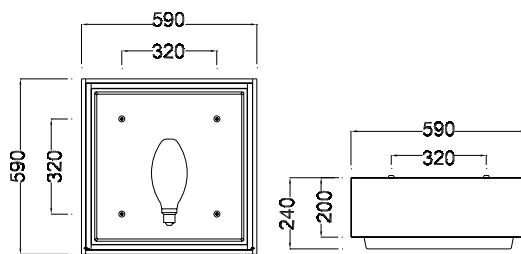
FEATURES

- 1 Neoprene rubber gasketed & hinged diffuser frame.
 - 2 Internal specular aluminium reflectors which can be individually removed for control gear access
 - 3 All control equipment is gear tray mounted. Gear trays are 1.2mm galvanized steel
 - 4 The luminaire is supplied standard with pre-wiring to allow future on site fitting of a standby relay & lamp. The luminaire may also be ordered complete with the standby relay & lamp. After switch-on, or momentary loss of supply voltage, HID lamps take several minutes before full luminous output, or re-strike is achieved. In some applications, it is important to have some degree of instant light. The function of the relay is to provide instant light from the tungsten halogen standby lamp until the HID lamp is approximately 70% - 75% of full output, at which time the relay switches off the standby lamp. This is also the case in the event of a momentary loss of supply voltage. Should the HID lamp fail to strike, the standby lamp will remain on indefinitely.
- Universal mounting. The luminaire may be either surface or recessed T/bar mounted. The luminaire may be recessed mounted in plaster ceilings with the use of the Davis PFW18 plaster frame.
 - Powder coated white, 1mm thick steel body and diffuser frame
 - E39 Lamp holder
 - 25mm diameter rear cable entry hole
 - UV stabilized polycarbonate shallow drop diffuser
 - Optional pyramid & deep drop diffusers available
 - Supplied with integral or optional remote control gear

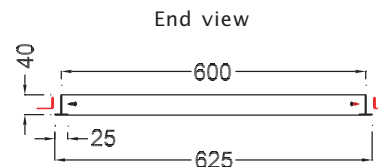
APPLICATION

- Undercover car park entrances
- showrooms
- display areas
- multi-sports halls
- service stations

DIMENSIONS



PFW18 PLASTER FRAME FOR RECESSED MODELS



cut out size 605 X 605

For mounting details see general catalogue page G1
Bianca Senior weight 16.5kg (maximum)

BIANCA SENIOR - SHALLOW DROP DIFFUSER

012B

Manufactured to standards – IEC60598.1
IEC60598.2.1
IEC60598.2.2
CISPR15

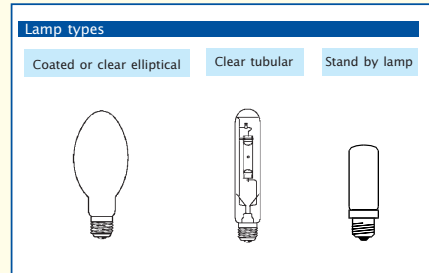


*“When your
business
depends
on light.”*

Model No.	Type	Options
BISU250MVS	Mercury Vapour	P Pyramid diffuser (Replaces S in model number)
BISU400MVS	Mercury Vapour	D Deep drop diffuser (Replaces S in model number)
BISU250MHS	Metal Halide	RC Remote Control (first suffix after model number)
BISU400MHS	Metal Halide	TH250 250w Tungsten Halogen standby lamp & relay (second suffix after model number)
BISU150SS	High Pressure Sodium	
BISU250SS	High Pressure Sodium	
BISU400SS	High Pressure Sodium	

Single ended E39/E40 lamps
Stand by lamp Osram halolux 644801M 250w TH E27 coated

Example: BISU400MVRCTH250



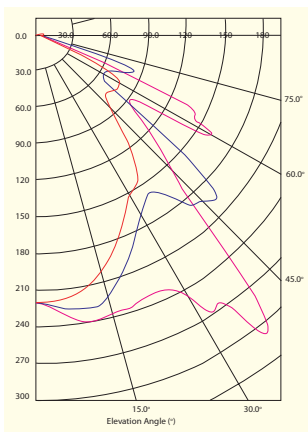
BIANCA SENIOR HPS

150w, 250w, 400w clear lamp
Photometric data applies to all three models

POLAR CURVE

cd/1000lms 1 Max 285cd in CO plane at 40° gamma

Legend
(C-Planes)
-0°
-45°
-90°



CO Plane
C45 Plane
C90 Plane

CIE Aiming Convention
CO Plane across the lamp

LUMINOUS INTENSITY TABLE (cd/1000lms)

γ Gamma	C0	C22.5	C45	C67.5	C90
0.0	219	219	219	219	219
5.0	227	227	225	221	218
10.0	238	238	229	219	212
15.0	237	236	222	211	202
20.0	236	224	207	199	186
25.0	232	213	187	179	168
30.0	248	203	171	165	151
35.0	258	237	158	172	145
40.0	285	261	175	163	120
45.0	159	141	190	104	84
50.0	121	102	188	69	72
55.0	91	92	72	71	78
60.0	178	99	64	81	80
65.0	148	125	66	70	55
70.0	32	42	87	34	26
75.0	18	20	50	18	18
80.0	12	13	14	15	16
85.0	9	9	8	10	10
90.0	3	4	4	4	3

LUMINOUS OPENING: 500mm x 500mm

AVERAGE LUMINANCE TABLE

γ Gamma	C0	C45	C90
45.0	808	931	426
55.0	548	414	471
65.0	1141	473	424
75.0	201	500	201
85.0	187	133	207

Luminance in cd/m²/1000lms

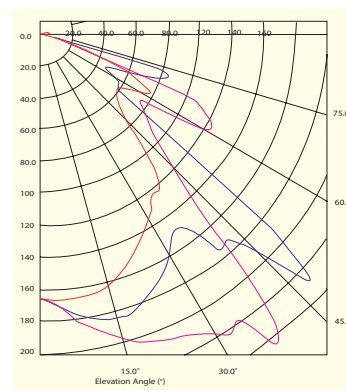
BIANCA SENIOR METAL HALIDE

250w & 400w clear lamp
Photometric data applies to both models

POLAR CURVE

cd/1000lms 1 Max 226cd in CO plane at 40° gamma

Legend
(C-Planes)
-0°
-45°
-90°



CO Plane
C45 Plane
C90 Plane

CIE Aiming Convention
CO Plane across the lamp

LUMINOUS INTENSITY TABLE (cd/1000lms)

γ Gamma	C0	C22.5	C45	C67.5	C90
0.0	164	164	164	164	164
5.0	174	175	173	169	167
10.0	187	188	181	172	166
15.0	197	195	183	171	163
20.0	204	199	180	167	154
25.0	208	196	172	157	145
30.0	216	189	160	146	133
35.0	213	198	147	147	120
40.0	226	231	179	198	114
45.0	112	121	189	101	74
50.0	89	85	197	65	61
55.0	76	77	63	61	57
60.0	121	73	55	56	68
65.0	112	114	41	81	69
70.0	49	76	77	57	45
75.0	17	19	74	19	18
80.0	11	12	14	15	15
85.0	8	9	7	10	10
90.0	2	4	4	4	2

LUMINOUS OPENING: 500mm x 500mm

AVERAGE LUMINANCE TABLE

γ Gamma	C0	C45	C90
45.0	572	928	376
55.0	461	360	347
65.0	864	295	530
75.0	189	741	200
85.0	169	126	212

Luminance in cd/m²/1000lms

UTILISATION FACTOR TABLE - CIBSE TM5 (fine grid method min/ave 0.8)

LOR: 63.7%				SHR NOM: 1.5 : 1.0					SHR MAX: 1.51 : 1.0												
Reflectance				Room Index (K)																	
Ceiling	Walls	Floor	0.75	1.00	1.25	1.50	2.00	2.50	3.00	4.00	5.00	0.75	1.00	1.25	1.50	2.00	2.50	3.00	4.00	5.00	
0.70	0.50	0.20	0.36	0.42	0.47	0.50	0.55	0.58	0.60	0.63	0.65	0.32	0.38	0.42	0.45	0.49	0.52	0.54	0.56	0.58	0.58
0.70	0.30	0.20	0.31	0.38	0.43	0.46	0.51	0.55	0.57	0.61	0.63	0.28	0.33	0.37	0.41	0.45	0.49	0.51	0.54	0.56	0.56
0.70	0.10	0.20	0.28	0.34	0.39	0.43	0.48	0.52	0.55	0.58	0.61	0.24	0.30	0.34	0.38	0.42	0.46	0.48	0.52	0.54	0.54
0.50	0.50	0.20	0.35	0.41	0.45	0.49	0.53	0.56	0.58	0.60	0.62	0.28	0.36	0.40	0.43	0.47	0.49	0.51	0.54	0.55	0.55
0.50	0.30	0.20	0.31	0.37	0.42	0.45	0.50	0.53	0.55	0.58	0.60	0.27	0.32	0.37	0.40	0.44	0.47	0.49	0.52	0.54	0.54
0.50	0.10	0.20	0.28	0.34	0.38	0.42	0.47	0.51	0.53	0.57	0.59	0.24	0.30	0.34	0.37	0.41	0.45	0.47	0.50	0.52	0.52
0.30	0.50	0.20	0.34	0.40	0.44	0.47	0.51	0.54	0.55	0.58	0.59	0.30	0.35	0.39	0.41	0.45	0.48	0.49	0.51	0.53	0.53
0.30	0.30	0.20	0.30	0.36	0.41	0.44	0.48	0.51	0.53	0.56	0.58	0.27	0.32	0.36	0.39	0.43	0.45	0.47	0.50	0.52	0.52
0.30	0.10	0.20	0.27	0.33	0.38	0.41	0.46	0.49	0.52	0.55	0.57	0.24	0.29	0.33	0.36	0.41	0.44	0.46	0.49	0.50	0.50
0.00	0.00	0.00	0.26	0.32	0.36	0.39	0.44	0.47	0.49	0.52	0.54	0.23	0.28	0.31	0.34	0.38	0.41	0.43	0.46	0.47	0.47
Distribution Factors	Floor:	0.26	0.32	0.36	0.39	0.44	0.47	0.49	0.49	0.52	0.54	0.23	0.28	0.31	0.34	0.38	0.41	0.43	0.46	0.47	0.47
	Walls:	0.35	0.30	0.25	0.22	0.18	0.15	0.15	0.12	0.10	0.08	0.33	0.28	0.24	0.21	0.17	0.14	0.12	0.09	0.08	0.08
	Ceiling:	0.01	0.01	0.01	0.01	0.01	0.01	0.01	0.01	0.01	0.01	0.01	0.01	0.01	0.01	0.01	0.01	0.01	0.01	0.01	0.01
Bz Numbers		5	4	4	4	4	4	4	4	4	4	5	5	5	5	5	4	4	4	4	4

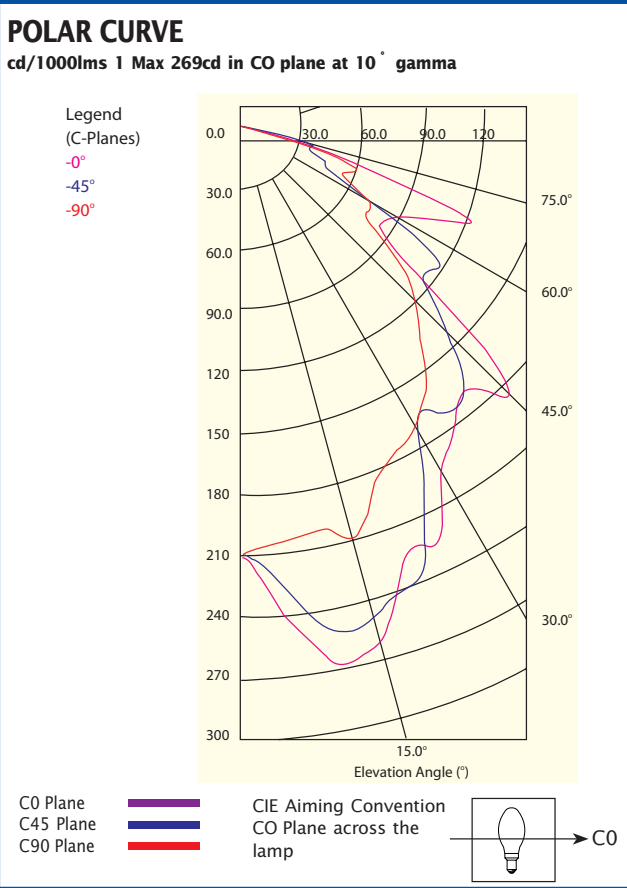
UTILISATION FACTOR TABLE - CIBSE TM5 (fine grid method min/ave 0.8)

LOR: 55.3%				SHR NOM: 1.5 : 1.0					SHR MAX: 1.54 : 1.0												
Reflectance				Room Index (K)																	
Ceiling	Walls	Floor	0.75	1.00	1.25	1.50	2.00	2.50	3.00	4.00	5.00	0.75	1.00	1.25	1.50	2.00	2.50	3.00	4.00	5.00	
0.70	0.50	0.20	0.32	0.38	0.42	0.45	0.49	0.52	0.54	0.56	0.58	0.32	0.38	0.42	0.45	0.49	0.52	0.54	0.56	0.58	0.58
0.70	0.30	0.20	0.28	0.33	0.37	0.41	0.45	0.49	0.51	0.54	0.56	0.28	0.33	0.37	0.41	0.45	0.49	0.51	0.54	0.56	0.56
0.70	0.10	0.20	0.24	0.30	0.34	0.38	0.42	0.46	0.48	0.52	0.54	0.24	0.30	0.34	0.38	0.42	0.46	0.48	0.52	0.54	0.54
0.50	0.50	0.20	0.31	0.36	0.40	0.43	0.47	0.49	0.51	0.54	0.55	0.28	0.36	0.40	0.43	0.47	0.49	0.51	0.54	0.55	0.55
0.50	0.30	0.20	0.27	0.32	0.37	0.40	0.44	0.47	0.49	0.52	0.54	0.27	0.32	0.37	0.40	0.44	0.47	0.49	0.52	0.54	0.54
0.50	0.10	0.20	0.24	0.30	0.34	0.37	0.41	0.45	0.47	0.50	0.52	0.24	0.30	0.34	0.37	0.41	0.45	0.47	0.50	0.52	0.52
0.30	0.50	0.20	0.30	0.35	0.39	0.41	0.45	0.48	0.49	0.51	0.53	0.30	0.35	0.39	0.41	0.45	0.48	0.49	0.51	0.53	0.53
0.30	0.30	0.20	0.27	0.32	0.36	0.39	0.43	0.45	0.47	0.50	0.52	0.27	0.32	0.36	0.39	0.43	0.45	0.47	0.50	0.52	0.52
0.30	0.10	0.20	0.24	0.29	0.33	0.36	0.41	0.44	0.46	0.49	0.50	0.24	0.29	0.33	0.36	0.41	0.44	0.46	0.49	0.50	0.50
0.00	0.00	0.00	0.23	0.28	0.31	0.34	0.38	0.41	0.43	0.46	0.47	0.23	0.28	0.31	0.34	0.38	0.41	0.43	0.46	0.47	0.47
Distribution Factors	Floor:	0.23	0.28	0.31	0.34	0.38	0.41	0.43	0.43	0.46	0.47	0.23	0.28	0.31	0.34	0.38	0.41	0.43	0.46	0.47	0.47
	Walls:	0.33	0.28	0.24	0.21	0.17	0.14	0.14	0.12	0.09	0.08	0.33	0.28	0.24	0.21	0.17	0.14	0.12	0.09	0.08	0.08
	Ceiling:	0.01	0.01	0.01	0.01	0.01	0.01	0.01	0.01	0.01	0.01	0.01	0.01	0.01	0.01	0.01	0.01	0.01	0.01	0.01	0.01
Bz Numbers		5	5	5	5	5	5	5	5	5	5	5	5	5	5	5	4	4	4	4	4

BIANCA SENIOR IN STAND BY MODE

250w tungsten halogen coated lamp

Osram Halolux 644801M. Luminous flux 4000 lumens.



LUMINOUS INTENSITY TABLE (cd/1000lms)

γ Gamma	C0	C22.5	C45	C67.5	C90
0.0	209	209	209	209	209
5.0	241	236	225	209	203
10.0	269	261	251	223	199
15.0	262	256	249	233	208
20.0	227	228	240	221	186
25.0	227	219	212	216	175
30.0	193	195	169	189	169
35.0	181	178	172	176	158
40.0	168	177	170	155	135
45.0	189	156	140	153	121
50.0	109	134	114	122	96
55.0	82	82	121	83	72
60.0	86	76	71	75	73
65.0	106	77	44	55	52
70.0	95	77	36	45	63
75.0	29	26	38	29	31
80.0	14	12	17	15	16
85.0	10	8	7	11	10
90.0	4	5	4	5	5

LUMINOUS OPENING: 500mm x 500mm

AVERAGE LUMINANCE TABLE

γ Gamma	C0	C45	C90
45.0	938	663	599
55.0	475	656	416
65.0	772	293	378
75.0	296	342	319
85.0	170	105	175

Luminance in cd/m²/1000lms

UTILISATION FACTOR TABLE - CIBSE TM5 (fine grid method min/ave 0.8)

LOR: 53.4%			SHR NOM: 1.5 : 1.0					SHR MAX: 1.54 : 1.0			
Reflectance			Room Index (K)								
Ceiling	Walls	Floor	0.75	1.00	1.25	1.50	2.00	2.50	3.00	4.00	5.00
0.70	0.50	0.20	0.32	0.38	0.41	0.44	0.48	0.50	0.52	0.54	0.56
0.70	0.30	0.20	0.28	0.34	0.38	0.41	0.45	0.47	0.49	0.52	0.54
0.70	0.10	0.20	0.25	0.31	0.35	0.38	0.42	0.45	0.47	0.50	0.52
0.50	0.50	0.20	0.31	0.36	0.40	0.42	0.46	0.48	0.50	0.52	0.53
0.50	0.30	0.20	0.28	0.33	0.37	0.40	0.43	0.46	0.48	0.50	0.52
0.50	0.10	0.20	0.25	0.30	0.34	0.37	0.41	0.44	0.46	0.49	0.50
0.30	0.50	0.20	0.30	0.35	0.39	0.41	0.44	0.46	0.48	0.50	0.51
0.30	0.30	0.20	0.27	0.32	0.36	0.39	0.42	0.45	0.46	0.48	0.50
0.30	0.10	0.20	0.25	0.30	0.34	0.36	0.40	0.43	0.45	0.47	0.49
0.00	0.00	0.00	0.24	0.29	0.32	0.35	0.38	0.41	0.43	0.45	0.46
Distribution Factors	Floor:		0.24	0.29	0.32	0.35	0.38	0.41	0.43	0.45	0.46
	Walls:		0.29	0.24	0.21	0.18	0.14	0.12	0.10	0.08	0.07
	Ceiling:		0.01	0.01	0.01	0.01	0.01	0.01	0.01	0.01	0.01
Bz Numbers			4	4	4	4	4	4	4	4	4

MALAYSIA KUALA LUMPUR Sales Office: Tel:(03) 5636 4348 Fax:(03) 5636 4352 **PENANG** Sales Office: Tel:(04) 507 0580

Fax:(04) 507 0968 **SINGAPORE** Sales Office: Tel: 6745 2511 Fax: 6745 5828 **AUSTRALIA** Sales ENQUIRIES ALL STATES:

Tel: 1300 851 001 **NEW ZEALAND** AUCKLAND Sales Office (09) 2710204 Fax: (09) 2713144

Distributors in: Pacific Islands, New Zealand, United Kingdom, Vietnam, Thailand, Indonesia, Bangladesh, Sri Lanka

Lighting designs on request
 IES files on request or available on Davis website

Website: www.davislighting.com

Email: sales@davislighting.com

Davis Lighting is a registered trade name

Davis Lighting reserves the right to change specifications and materials without prior notice.
 Materials and components may vary from region to region.



*"When your
 business
 depends
 on light."*