

SLIMLINE BATTEN

LP136



Easy access
to gear tray

FEATURES

- Durable, yet slim line steel construction, with both single and twin lamp batten having a base of only 54mm.
- Simple 90° turn twist toggles allow easy access to the gear tray without the need for tools.
- Large terminal blocks for fast and easy cable connection.
- Fully epoxy coated in white both inside and out, providing unprecedented protection and the highest quality finish.
- Replaceable polycarbonate lamp holders securely held in UV stabilised, non-discolouring, high impact end cap assemblies.
- Full range of reflectors, wire guards and a choice of round or square diffuser kits.
- End to end continuous mounting from preformed punch out. No special tools or end cap drilling required.
- Available in wiring configuration to suit local market requirements.

ACCESSORIES

Wire Guard Kits



OPTIONS

Also available:

- Reflectors
- Round & Square Diffuser Kits
- Emergency Modules
- Electronic & Low Loss Ballasts
- Dimming Gear
- Special Wiring
- Fused Terminal Blocks

APPLICATION

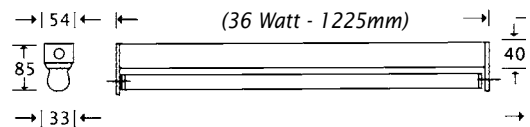
This multi-purpose luminaire is suitable for domestic and many commercial and industrial applications, providing optimum lighting levels at the lowest cost.

Able to be surface mounted, conduit or chain suspended, this is a truly versatile and functional design.

The Davis Slimline Batten has been designed to operate the 26mm high efficiency fluorescent tube, but will also accept the 38mm tube. Form and function have been combined to produce a batten that is not only visually pleasing, but also offers easy installation, maintenance and tube replacement.

DIMENSIONS

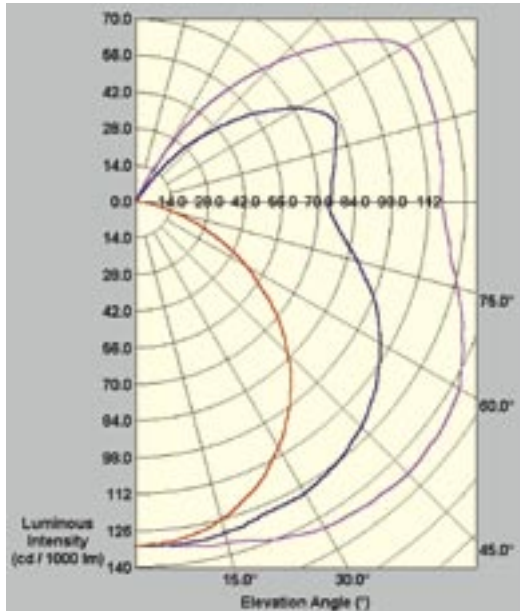
LP136



OTHER MODELS

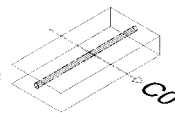
- LP118** - 18 Watt - Length - 615mm
- LP130** - 30 Watt Length - 920mm
- LP158** - 58 Watt Length - 1525mm
- LP170** - 70 Watt Length - 1790mm

POLAR CURVE Luminous intensity (cd / 1000 lm)



C0 Plane
C45 Plane
C90 Plane

CIE Aiming Convention
CO Plane across the tube



LUMINOUS INTENSITY TABLE (CD/1000LMS)

| γ Gamma | C0 | C22.5 | C45 | C67.5 | C90 |
|---------|-----|-------|-----|-------|-----|
| 0° | 132 | 132 | 132 | 132 | 132 |
| 5° | 132 | 132 | 132 | 131 | 131 |
| 10° | 134 | 133 | 132 | 130 | 129 |
| 15° | 135 | 134 | 131 | 128 | 126 |
| 20° | 138 | 135 | 130 | 124 | 121 |
| 25° | 141 | 138 | 129 | 120 | 116 |
| 30° | 144 | 139 | 129 | 115 | 109 |
| 35° | 145 | 140 | 127 | 109 | 101 |
| 40° | 146 | 140 | 125 | 103 | 92 |
| 45° | 147 | 139 | 122 | 97 | 82 |
| 50° | 146 | 138 | 118 | 90 | 72 |
| 55° | 145 | 136 | 113 | 82 | 60 |
| 60° | 143 | 132 | 108 | 73 | 49 |
| 65° | 138 | 128 | 102 | 65 | 37 |
| 70° | 133 | 122 | 95 | 56 | 26 |
| 75° | 127 | 116 | 88 | 47 | 16 |
| 80° | 122 | 110 | 81 | 39 | 8 |
| 85° | 119 | 107 | 76 | 32 | 2 |
| 90° | 117 | 105 | 74 | 30 | 0 |
| 95° | 118 | 105 | 75 | 31 | 0 |
| 100° | 118 | 106 | 77 | 35 | 0 |
| 105° | 119 | 107 | 79 | 36 | 0 |
| 110° | 119 | 108 | 82 | 32 | 0 |
| 115° | 120 | 109 | 80 | 26 | 0 |
| 120° | 119 | 106 | 72 | 19 | 0 |
| 125° | 108 | 95 | 60 | 11 | 0 |
| 130° | 92 | 80 | 48 | 1 | 0 |
| 135° | 75 | 64 | 35 | 0 | 0 |
| 140° | 58 | 48 | 22 | 0 | 0 |
| 145° | 41 | 32 | 4 | 0 | 0 |
| 150° | 17 | 11 | 0 | 0 | 0 |
| 155° | 3 | 0 | 0 | 0 | 0 |
| 160° | 0 | 0 | 0 | 0 | 0 |
| 165° | 0 | 0 | 0 | 0 | 0 |
| 170° | 0 | 0 | 0 | 0 | 0 |
| 175° | 0 | 0 | 0 | 0 | 0 |
| 180° | 0 | 0 | 0 | 0 | 0 |

AVERAGE LUMINANCE TABLE

| γ Gamma | C0 | C45 | C90 |
|---------|------|------|------|
| 45° | 3400 | 3302 | 3819 |
| 55° | 3406 | 3220 | 3449 |
| 65° | 3393 | 3142 | 2864 |
| 75° | 3408 | 3048 | 2013 |
| 85° | 3594 | 3156 | 912 |

Luminance in cd/m²/1000lms

UTILISATION FACTOR TABLE - CIBSE TM5 (fine grid method min/ave 0.8)

| LOR: 93.3% | | | SHR NOM: 1.75 : 1.0 | | | | | SHR MAX: 1.95 : 1.0 | | | |
|----------------------|--------|-------|---------------------|------|------|------|------|---------------------|------|------|------|
| Reflectance | | | Room Index (K) | | | | | | | | |
| Ceiling | Walls | Floor | 0.75 | 1.00 | 1.25 | 1.50 | 2.00 | 2.50 | 3.00 | 4.00 | 5.00 |
| 0.70 | 0.50 | 0.20 | 0.41 | 0.49 | 0.55 | 0.60 | 0.66 | 0.71 | 0.74 | 0.79 | 0.82 |
| 0.70 | 0.30 | 0.20 | 0.33 | 0.42 | 0.48 | 0.53 | 0.60 | 0.65 | 0.68 | 0.74 | 0.77 |
| 0.70 | 0.10 | 0.20 | 0.28 | 0.36 | 0.42 | 0.47 | 0.54 | 0.59 | 0.64 | 0.69 | 0.73 |
| 0.50 | 0.50 | 0.20 | 0.37 | 0.44 | 0.49 | 0.53 | 0.59 | 0.63 | 0.65 | 0.69 | 0.72 |
| 0.50 | 0.30 | 0.20 | 0.30 | 0.38 | 0.43 | 0.47 | 0.53 | 0.58 | 0.61 | 0.66 | 0.69 |
| 0.50 | 0.10 | 0.20 | 0.26 | 0.33 | 0.38 | 0.43 | 0.49 | 0.54 | 0.57 | 0.62 | 0.66 |
| 0.30 | 0.50 | 0.20 | 0.32 | 0.39 | 0.43 | 0.47 | 0.52 | 0.55 | 0.57 | 0.61 | 0.63 |
| 0.30 | 0.30 | 0.20 | 0.27 | 0.34 | 0.39 | 0.42 | 0.47 | 0.51 | 0.54 | 0.58 | 0.61 |
| 0.30 | 0.10 | 0.20 | 0.23 | 0.30 | 0.35 | 0.38 | 0.44 | 0.48 | 0.51 | 0.55 | 0.58 |
| 0.00 | 0.00 | 0.00 | 0.19 | 0.24 | 0.28 | 0.31 | 0.36 | 0.39 | 0.41 | 0.45 | 0.47 |
| Distribution Factors | Floor: | 0.19 | 0.19 | 0.23 | 0.27 | 0.30 | 0.35 | 0.38 | 0.41 | 0.44 | 0.47 |
| | | 0.44 | 0.44 | 0.41 | 0.36 | 0.33 | 0.28 | 0.25 | 0.22 | 0.19 | 0.16 |
| | | 0.30 | 0.30 | 0.30 | 0.30 | 0.30 | 0.30 | 0.30 | 0.30 | 0.30 | 0.30 |
| Bz Numbers | | 7 | 7 | 6 | 6 | 6 | 6 | 6 | 6 | 6 | 6 |

Photometric data also applies to 18w, 30w, 58w and 70w models

MALAYSIA KUALA LUMPUR Sales Office: Tel:(03) 5636 4348 Fax:(03) 5636 4352 **PENANG** Sales Office: Tel:(04) 507 0580 Fax:(04) 507 0968 **SINGAPORE** Sales Office: Tel: 6745 2511 Fax: 6745 5828 **AUSTRALIA** Sales ENQUIRIES ALL STATES: Tel: 1300 851 001 **NEW ZEALAND** AUCKLAND Sales Office (09) 2710204 Fax: (09) 2713144

Distributors in: Pacific Islands, New Zealand, United Kingdom, Vietnam, Thailand, Indonesia, Bangladesh, Sri Lanka

Lighting designs on request
IES files on request or available on Davis website
Website: www.davislighting.com
Email: sales@davislighting.com

Davis Lighting is a registered trade name
Davis Lighting reserves the right to change specifications and materials without prior notice.
Materials and components may vary from region to region.



"When your business depends on light."