

# BATTENS



## ELARA BATTEN (T5)

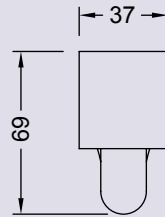
The Elara is a low profile range of energy saving luminaires. They are suitable for either ceiling or wall mounting. They are available in bare tube, diffused or wire guarded varieties. The diffusers & wire guards are also available as add-on accessories that may be fitted to the base model at any time after installation.



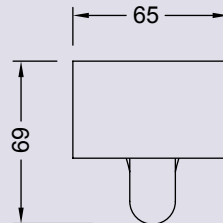
Application example

### Bare Batten

Single Tube



<b>EL114T5</b>	1/14w	575mm
<b>EL121T5</b>	1/21w	875mm
<b>EL124T5</b>	1/24w	575mm
<b>EL128T5</b>	1/28w	1175mm
<b>EL139T5</b>	1/39w	875mm
<b>EL154T5</b>	1/54w	1175mm

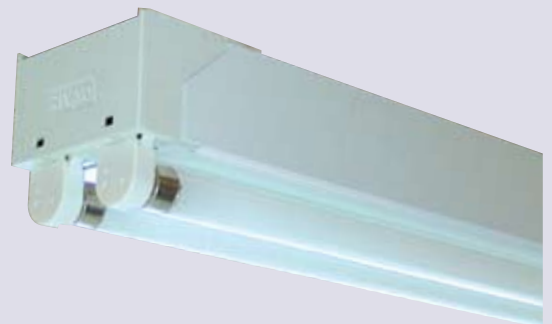
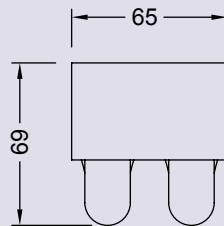


<b>ELB114T5</b>	1/14w	575mm
<b>ELB121T5</b>	1/21w	875mm
<b>ELB124T5</b>	1/24w	575mm
<b>ELB128T5</b>	1/28w	1175mm
<b>ELB139T5</b>	1/39w	875mm
<b>ELB154T5</b>	1/54w	1175mm

### Bare Batten

Twin Tube

<b>EL214T5</b>	2/14w	575mm
<b>EL221T5</b>	2/21w	875mm
<b>EL224T5</b>	2/24w	575mm
<b>EL228T5</b>	2/28w	1175mm
<b>EL235T5</b>	2/35w	1475mm
<b>EL239T5</b>	2/39w	875mm
<b>EL249T5</b>	2/49w	1475mm
<b>EL254T5</b>	2/54w	1175mm



# BATTENS

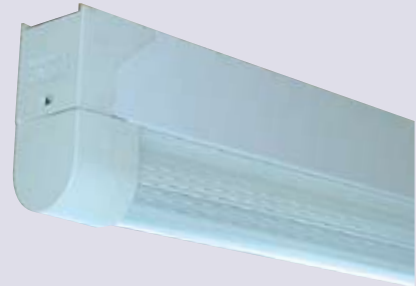
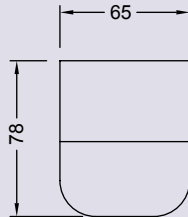
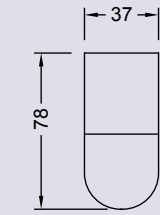
## ELARA BATTEN (T5) continued



### Diffused Batten

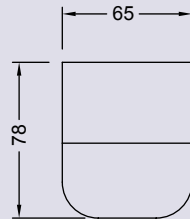
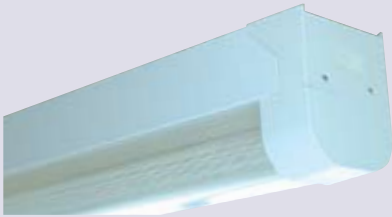
Single tube with reeded acrylic diffuser

<b>ELD114T5</b>	1/14w	575mm
<b>ELD121T5</b>	1/21w	875mm
<b>ELD124T5</b>	1/24w	575mm
<b>ELD128T5</b>	1/28w	1175mm
<b>ELD139T5</b>	1/39w	875mm
<b>ELD154T5</b>	1/54w	1175mm
<b>ELBD114T5</b>	1/14w	575mm
<b>ELBD121T5</b>	1/21w	875mm
<b>ELBD124T5</b>	1/24w	575mm
<b>ELBD128T5</b>	1/28w	1175mm
<b>ELBD139T5</b>	1/39w	875mm
<b>ELBD154T5</b>	1/54w	1175mm



### Diffused Batten

Twin tube with reeded acrylic diffuser

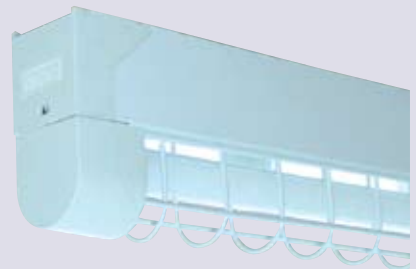
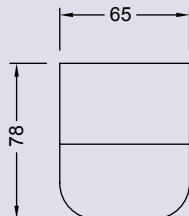
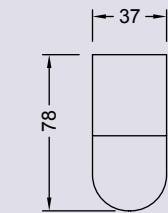


<b>ELD214T5</b>	2/14w	575mm
<b>ELD221T5</b>	2/21w	875mm
<b>ELD224T5</b>	2/24w	575mm
<b>ELD228T5</b>	2/28w	1175mm
<b>ELD239T5</b>	2/39w	875mm
<b>ELD254T5</b>	2/54w	1175mm

### Wire Guarded Batten

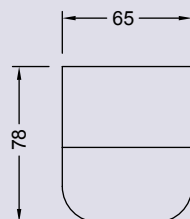
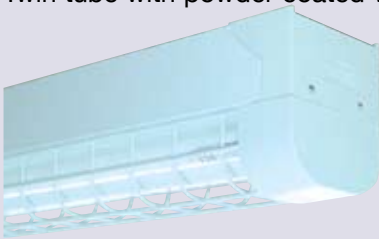
Single tube with powder coated wire guard

<b>ELW114T5</b>	1/14w	575mm
<b>ELW121T5</b>	1/21w	875mm
<b>ELW124T5</b>	1/24w	575mm
<b>ELW128T5</b>	1/28w	1175mm
<b>ELW139T5</b>	1/39w	875mm
<b>ELW154T5</b>	1/54w	1175mm
<b>ELBW114T5</b>	1/14w	575mm
<b>ELBW121T5</b>	1/21w	875mm
<b>ELBW124T5</b>	1/24w	575mm
<b>ELBW128T5</b>	1/28w	1175mm
<b>ELBW139T5</b>	1/39w	875mm
<b>ELBW154T5</b>	1/54w	1175mm



### Wire Guarded Batten

Twin tube with powder coated wire guard



<b>ELW214T5</b>	2/14w	575mm
<b>ELW221T5</b>	2/21w	875mm
<b>ELW224T5</b>	2/24w	575mm
<b>ELW228T5</b>	2/28w	1175mm
<b>ELW239T5</b>	2/39w	875mm
<b>ELW254T5</b>	2/54w	1175mm

These products may be supplied in multiple packaging

T5 (16mm diameter) fluorescent lamp G5 lamp cap

# BATTENS

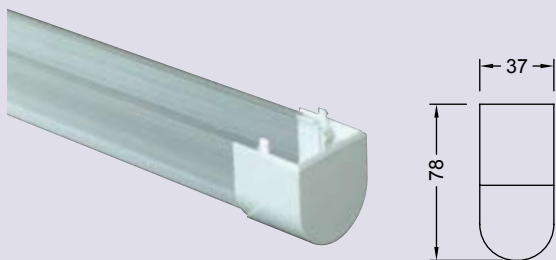
## ELARA BATTEN (T5) ACCESSORIES

This range of optional add-on accessories can be added during or after installation of the bare tube (T5) models.

### Diffuser Kit

Single tube with reeded acrylic diffuser

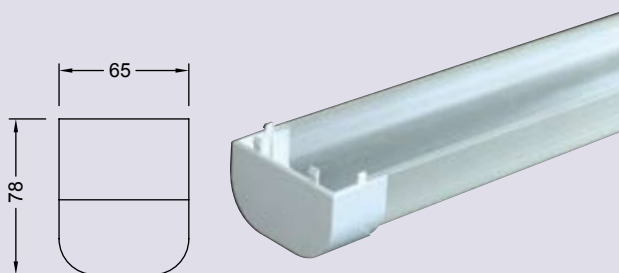
<b>ELDK1/600T5</b>	1/14-24w	575mm
<b>ELDK1/900T5</b>	1/21-39w	875mm
<b>ELDK1/1200T5</b>	1/28-54w	1175mm
<b>ELDK1/1500T5</b>	1/35-49w	1475mm



### Diffuser Kit

Twin tube with reeded acrylic diffuser

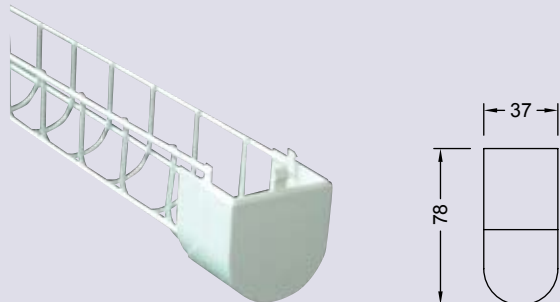
<b>ELDK2/600T5</b>	2/14-24w	575mm
<b>ELDK2/900T5</b>	2/21-39w	875mm
<b>ELDK2/1200T5</b>	2/28-54w	1175mm
<b>ELDK2/1500T5</b>	2/35-49w	1475mm



### Wire Guard Kit

Single tube white powder coated metal

<b>ELWK1/600T5</b>	1/14-24w	575mm
<b>ELWK1/900T5</b>	1/21-39w	875mm
<b>ELWK1/1200T5</b>	1/28-54w	1175mm
<b>ELWK1/1500T5</b>	1/35-49w	1475mm



### Wire Guard Kit

Twin tube white powder coated metal

<b>ELWK2/600T5</b>	2/14-24w	575mm
<b>ELWK2/900T5</b>	2/21-39w	875mm
<b>ELWK2/1200T5</b>	2/28-54w	1175mm
<b>ELWK2/1500T5</b>	2/35-49w	1475mm

