

# COMMERCIAL DIFFUSED & OPEN

## ASYMMETRICAL DISTRIBUTION

Asymmetrical distribution fluorescent luminaires provide high vertical illuminance in a specific direction. They are particularly suitable for illumination of white boards, wall washing and window display applications. They are also an excellent choice for lighting areas where the luminaire cannot be centrally mounted.



Application example



## HELENE SERIES

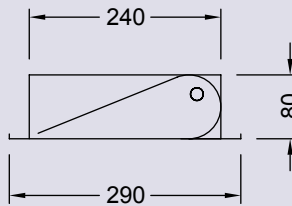
The Helene range of asymmetrical distribution luminaires are available for recessed T/Bar, recessed plaster and surface mounting. They are a single tube luminaire with a high grade aluminium reflector.

### RECESSED T/BAR T5



#### Helene Recessed T/Bar

For recessed T/Bar ceilings. x designates reflector type (s) specular, (d) semi-specular or (h) specular semi-haze.



<b>HET114T5x</b>	1/14w	600mm (nom)
<b>HET124T5x</b>	1/24w	600mm (nom)
<b>HET128T5x</b>	1/28w	1200mm (nom)
<b>HET154T5x</b>	1/54w	1200mm (nom)

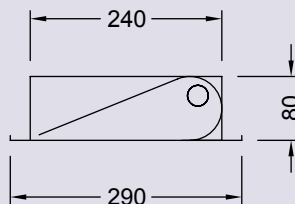
### RECESSED PLASTER T8

#### Helene Recessed Plaster

For recessed plaster ceilings. x designates reflector type (s) specular, (d) semi-specular or (h) specular semi-haze.

**HEP118x** 1/18w 653mm  
Cut out size 617 x 245

**HEP136x** 1/36w 1263mm  
Cut out size 1227 x 245



Compatible - see page 7 for options

T8 (26mm diameter) fluorescent lamp G13 lamp cap  
T5 (16mm diameter) fluorescent lamp G5 lamp cap

# COMMERCIAL DIFFUSED & OPEN

## ASYMMETRICAL DISTRIBUTION continued

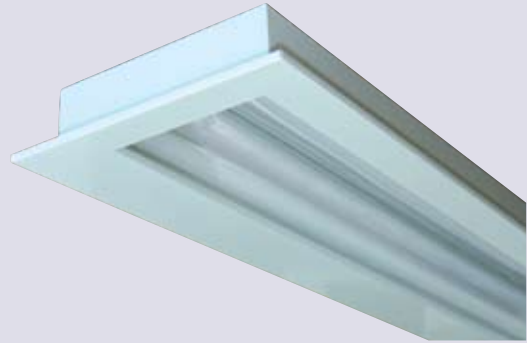
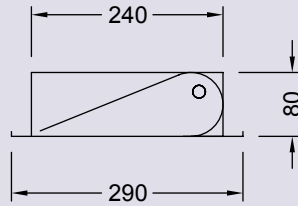
### RECESSED PLASTER T5



#### Helene Recessed Plaster

For recessed plaster ceilings. x designates reflector type  
(s) specular, (d) semi-specular or (h) specular semi-haze.

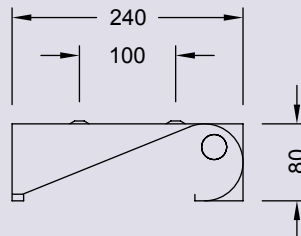
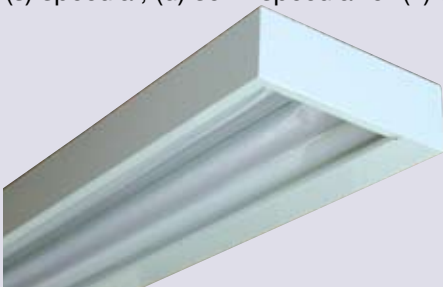
<b>HEP114T5x</b>	1/14w	592mm
<b>HEP124T5x</b>	1/24w	592mm
	Cut out size 575 x 245	
<b>HEP128T5x</b>	1/28w	1192mm
<b>HEP154T5x</b>	1/54w	1192mm
	Cut out size 1175 x 245	



### SURFACE MOUNTED T8

#### Helene Surface Mounted

For recessed plaster ceilings. x designates reflector type  
(s) specular, (d) semi-specular or (h) specular semi-haze.



<b>HES118x</b>	1x18w	630mm
	Mountings 430 x 100	
<b>HES136x</b>	1x36w	1240mm
	Mountings 1030 x 100	

### SURFACE MOUNTED T5



#### Helene Recessed Plaster

For recessed plaster ceilings. x designates reflector type  
(s) specular, (d) semi-specular or (h) specular semi-haze.

<b>HES114T5x</b>	1x14w	590mm
<b>HES124T5x</b>	1x24w	590mm
	Mountings 430 x 100	
<b>HES128T5x</b>	1x28w	1190mm
<b>HES154T5x</b>	1x54w	1190mm
	Mountings 1030 x 100	

