

COMMERCIAL DIFFUSED & OPEN

RECESSED OPEN T5/PL

Umbriel Series (T5 or PL)

The Umbriel series of luminaires is designed for recessed T/Bar ceilings and plaster recessed mounting. This range is available in PL & T5 lamp twin tubes. They are a semi-indirect style of luminaire with lamps hidden behind a perforated glare shield to provide maximum comfort. The low glare installation makes this suitable for general offices and VDU workstation areas. The body is 600mm wide and reflectors are coated with high reflection powder paint for optimum light output.



Not available in Australia & New Zealand

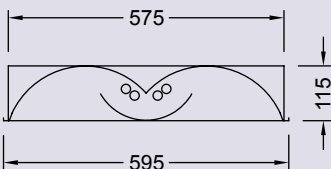
Umbriel Recessed T/Bar

UMTW236PL	2/36w TCL	600mm (nom)
UMTW255PL	2/55w TCL	600mm (nom)
UMTW214T5	2/14w T5	600mm (nom)
UMTW224T5	2/24w T5	600mm (nom)



Umbriel Recessed Plaster

UMPW236PL	2/36w TCL	600mm (nom)
UMPW255PL	2/55w TCL	600mm (nom)
UMPW214T5	2/14w T5	600mm (nom)
UMPW224T5	2/24w T5	600mm (nom)



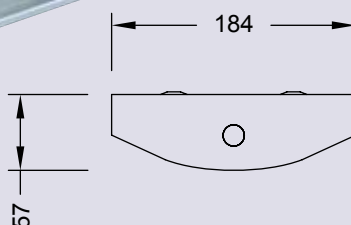
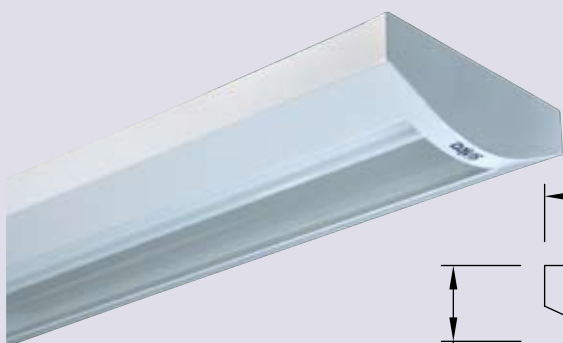
Not available in Australia & New Zealand



SAT Series (T5)

The Davis SAT series consists of single & twin T5 tube luminaires designed for surface mounting only. Slim & sleek body profiles make SAT suitable for all general indoor applications. These luminaires offer ease of installation & maintenance. Control gear is mounted on a removable tray. The reflector is coated with high reflection powder paint for optimum light output.

Not available in Australia & New Zealand



SAT114T5	1/14w T5	600mm (nom)
SAT124T5	1/24w T5	600mm (nom)
SAT214T5	2/14w T5	600mm (nom)
SAT224T5	2/24w T5	600mm (nom)
SAT128T5	1/28w T5	1200mm (nom)
SAT154T5	1/54w T5	1200mm (nom)
SAT228T5	2/28w T5	1200mm (nom)
SAT254T5	2/54w T5	1200mm (nom)



Compatible - see page 7 for options

T5 (16mm diameter) fluorescent lamp G5 lamp cap
T8 (26mm diameter) fluorescent lamp G13 lamp cap
Compact fluorescent TC-L type 2G11 base