

# SEMI-LOW BRIGHT LOUVRE

The Semi-Low Bright range of luminaires incorporate louvres made from high purity grade aluminium. They may be supplied in either specular or semi specular finish. The aluminium cross blades are a matt ribbed finish, commonly called a Christmas tree cross blade. They are suitable for department stores, shopping centres, product display areas and where high vertical illuminance is important. All recessed luminaires are supplied with 25mm cable entry for hard wiring or 1.5m flex and plug. Surface mounted models are supplied with 25mm cable entry. Please check with your local sales office for the standard supplied in your area.



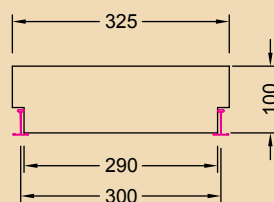
## LEDA SERIES T8

The Leda Semi-Low Bright series is a range of models suitable for T/Bar ceilings, recessed plaster ceilings and also surface mounted models. They are a low profile luminaire of only 100mm in depth. They are available in T8 Fluorescent, as well as a range of compact fluorescent (CFL) models.

## RECESSED T/BAR T8

### Leda Recessed T/Bar

x designates reflector type (s) specular or (d) semi-specular louvre.



**LET218x** 2/18w 2x5 Cell 600mm (nom)  
**LET236x** 2/36w 2x11 Cell 1200mm (nom)

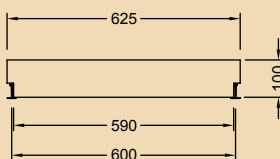
# SEMI-LOW BRIGHT LOUVRE

## RECESSED T/BAR T8

### Leda Recessed T/Bar

x designates reflector type (s) specular or (d) semi-specular louvre.

<b>LETW218x</b>	2/18w	2x5 Cell	600mm (nom)
<b>LETW318x</b>	3/18w	3x5 Cell	600mm (nom)
<b>LETW418x</b>	4/18w	4x5 Cell	600mm (nom)
<b>LETW236x</b>	2/36w	2x11 Cell	1200mm (nom)
<b>LETW336x</b>	3/36w	3x11 Cell	1200mm (nom)
<b>LETW436x</b>	4/36w	4x11 Cell	1200mm (nom)

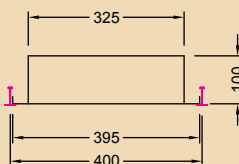


## RECESSED T/BAR AIR HANDLING T8

### Leda Recessed T/Bar Air Handling

For air delivery or air return. x designates reflector type (s) specular or (d) semi-specular louvre.

**Air slots measurements: 246 x 20 per slot. (36W - 4 per side, 18w - 2 per side)**



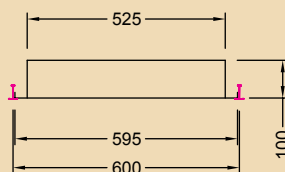
<b>LETM218Ax</b>	2/18w	2x5 Cell	600mm (nom)
<b>LETM236Ax</b>	2/36w	2x11 Cell	1200mm (nom)

### Leda Recessed T/Bar Air Handling

For air delivery or air return. x designates reflector type (s) specular or (d) semi-specular louvre.

**Air slots measurements: 246 x 20 per slot. (36W - 4 per side, 18w - 2 per side)**

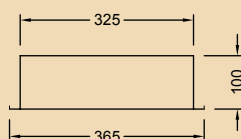
<b>LETW218Ax</b>	2/18w	2x5 Cell	600mm (nom)
<b>LETW318Ax</b>	3/18w	3x5 Cell	600mm (nom)
<b>LETW236Ax</b>	2/36w	2x11 Cell	1200mm (nom)
<b>LETW336Ax</b>	3/36w	3x11 Cell	1200mm (nom)



## RECESSED PLASTER T8

### Leda Recessed Plaster

x designates reflector type (s) specular or (d) semi-specular louvre.



<b>LEP218x</b>	2/18W	2x5 cell	670mm
			Cut out size 625 x 338
<b>LEP236x</b>	2/36W	2x11 cell	1270mm
			Cut out size 1235 x 338

# SEMI-LOW BRIGHT LOUVRE

## RECESSED PLASTER T8

### Leda Recessed Plaster

x designates reflector type (s) specular or (d) semi-specular louvre.

**LEPW218x** 2/18w 2x5 Cell 670mm  
**LEPW318x** 3/18w 3x5 Cell 670mm  
**LEPW418x** 4/18w 4x5 Cell 670mm

Cut out size 625 x 638

**LEPW236x** 2/36w 2x11 Cell 1270mm  
**LEPW336x** 3/36w 3x11 Cell 1270mm  
**LEPW436x** 4/36w 4x11 Cell 1270mm

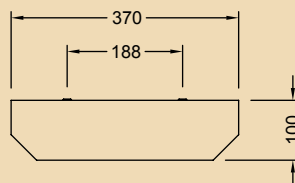
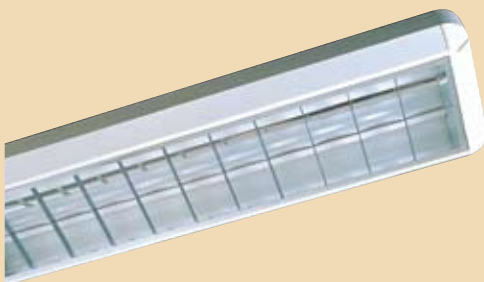
Cut out size 1235 x 638



## SURFACE MOUNTED T8

### Leda Surface Mounted

Featuring moulded plastic corner block. x designates reflector type (s) specular or (d) semi-specular louvre.



**LES218x** 2/18W 2x5 cell 668mm  
 Mountings 430 x 188

**LES236x** 2/36W 2x11 cell 1268mm  
 Mountings 1030 x 488

### Leda Surface Mounted

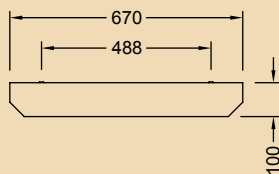
Featuring moulded plastic corner block. x designates reflector type (s) specular or (d) semi-specular louvre.

**LESW218x** 2/18w 2x5 Cell 668mm  
**LESW318x** 3/18w 3x5 Cell 668mm  
**LESW418x** 4/18w 4x5 Cell 668mm

Mountings 430 x 188

**LESW236x** 2/36w 2x11 Cell 1268mm  
**LESW336x** 3/36w 3x11 Cell 1268mm  
**LESW436x** 4/36w 4x11 Cell 1268mm

Mountings 1030 x 488



## SEMI-LOW BRIGHT LOUVRE

### LEDA SERIES COMPACT FLUORESCENT (CFL)

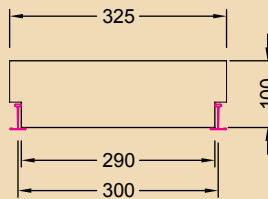
This range of twin compact fluorescent luminaires is a perfect addition to the Leda T8 series. They may be used in ancillary areas to where the Leda T8 is the major luminaire or in a stand alone installation. They are particularly suitable for small utility areas.

### RECESSED T/BAR (CFL)

#### Leda Recessed T/Bar

x designates reflector type (s) specular or (d) semi-specular louvre.

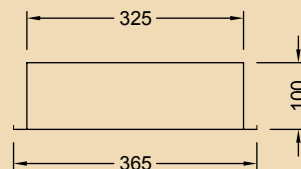
<b>LET211PLx</b>	2/11w TC-S2x3 Cell	300mm (nom)
<b>LET218PLx</b>	2/18w TC-L 2x3 Cell	300mm (nom)



### RECESSED PLASTER (CFL)

#### Leda Recessed Plaster

x designates reflector type (s) specular or (d) semi-specular louvre.



<b>LEP211PLx</b>	2/11w TC-S2x3 Cell	370mm
<b>LEP218PLx</b>	2/18w TC-L 2x3 Cell	370mm
	Cut out size 330 x 330	

### SURFACE MOUNTED (CFL)

#### Leda Surface Mounted

x designates reflector type (s) specular or (d) semi-specular louvre.

<b>LES211PLx</b>	2/11w TC-S2x3 Cell	370mm
<b>LES218PLx</b>	2/18w TC-L 2x3 Cell	370mm
	Mountings 130 x 188	

