

# CRESSIDA CRFM

Specialist Lighting / Cleanroom, Troffer

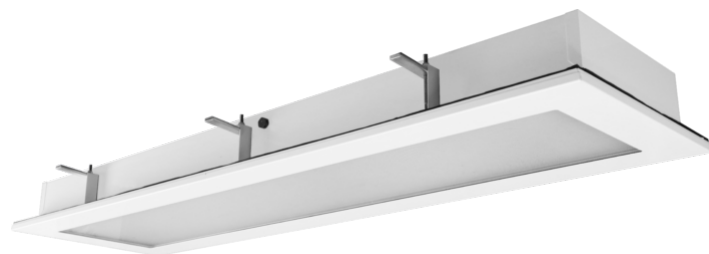


DAVISLIGHTING

## CRFM430-R93

### Features

- Clean screw-less magnetic cover
- Advanced optical design to deliver optimum performance and glare control
- Low glare microprism diffuser
- Clear diffuser layer for easy cleaning
- Tunable white options for Circadian lighting design
- IP65 and IK08 rated
- Solid and sturdy crank bracket install system
- Class ISO 3 certified to DIN
- EN ISO 14644-1



### Applications

- Industrial cleanroom
- Laboratory
- Hospital / Healthcare
- Food preparation area

### Options

- DALI control
- Tuneable white
- Smart sensor control
- Anti-microbial paint
- COI compliant

### Standards

- Manufactured under ISO 9001:2015 to standards
- IEC/AS/NZS 60598.1
- IEC/AS/NZS 60598.2.1
- IEC/AS/NZS 60598.2.2
- IEC/AS/NZS CISPR 15

### Mounting Methods



Recessed



# CRESSIDA CRFM

Specialist Lighting / Cleanroom, Troffer



## Specifications

Model	CRFM430-R93
Nominal Power (W)	30
Input Voltage (V)	220-240
Frequency (Hz)	50/60
Luminaire Flux (lm)	2979
Luminaire Efficacy (lm/W)	99
CRI (Ra)	>90
Power Factor	>0.95
SDCM	3
CCT (K)	3000
Luminaire Rated Life (hr)	50000
Ambient Temp. ta (°C)	45
Operating Temp. (°C)	-25 to +50
Weight (kg)	18
IK Rating	IK08

## Packaging Details

Model	CRFM430-R93
Product Carton Qty per box (pc)	1
Product Carton Dimension (mm)	1285 x 385 x 126
Product Carton Weight (kg)	23

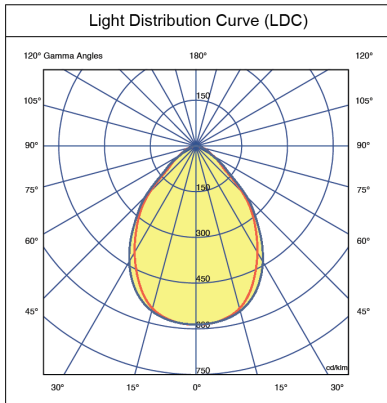
# CRESSIDA CRFM

Specialist Lighting / Cleanroom, Troffer



DAVISLIGHTING

## Lighting Data



## Dimensions

