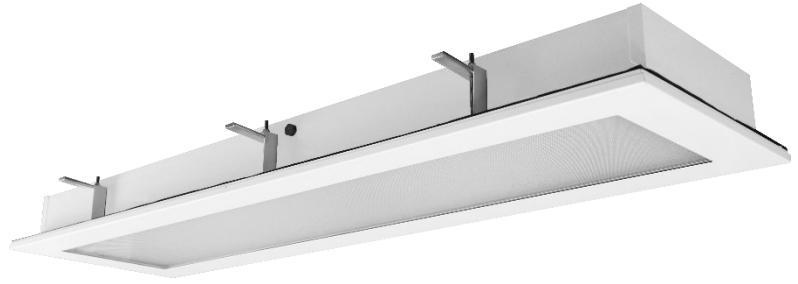


Installation Instruction



Cressida Series - CRFM



- Read all instructions to prevent injury, electric shock or damage due to fire or mechanical hazards.
- See product label for supply specifications.
- Suitable for direct mounting on flammable surfaces.

Storage:

Prior to installation products are to be stored in cool and dry conditions.

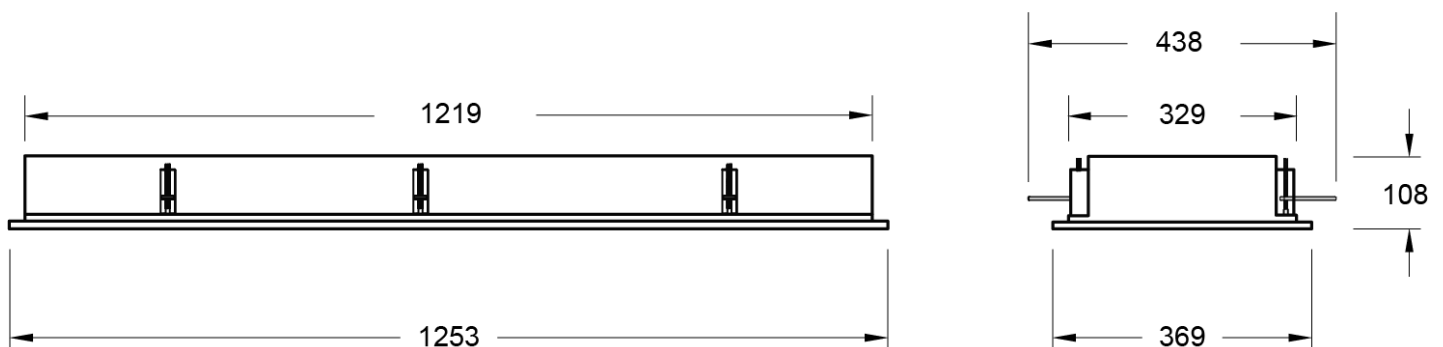
Application:

The installation application and orientation of the product is designed in accordance with the nominated product IP rating, class designation. Installation environments outside these conditions are not recommended.

Cautions:

- Electronic control equipment must not be subjected to high voltages, DO NOT MEGGER between Live and Neutral.
- All cable/conduit terminations must be installed in accordance with the designated IP rating of this product.
- Suitable installation fastening methods should be employed to ensure the mounting points are not damaged when subjected to vibration and or movement.
- This luminaire cannot be disassembled by non-professional.
- This luminaire must be installed by qualified electrician in accordance with local rules and codes.
- The external flexible cable or cord of this luminaire cannot be replaced; if the cord is damaged, the luminaire shall be destroyed.
- The light source of this luminaire is not replaceable; when the light source reaches its end of life the whole luminaire shall be replaced.
- This luminaire is not suitable for covering with thermally insulating material.

Dimensions (mm):



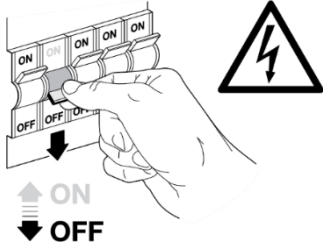
Cut Out Size: 1220 x 330mm

Suitable for ceiling thickness: 20-77mm

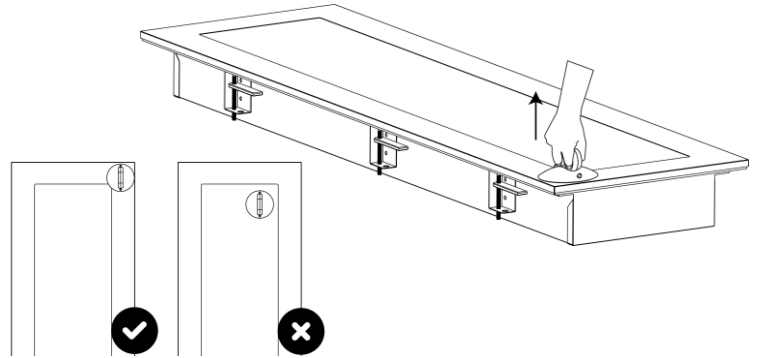
Installation:

Warning: This installation may be performed by 2 persons or more.

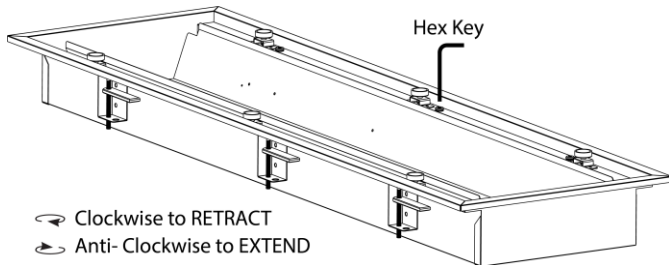
1. Turn OFF power.



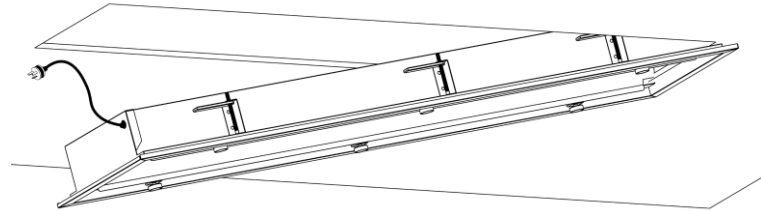
2. Place luminaire on a flat surface. Using the suction lifter place it on one corner to release the frame from casing. Separate the frame from the casing by disconnect safety lanyards and set it aside.



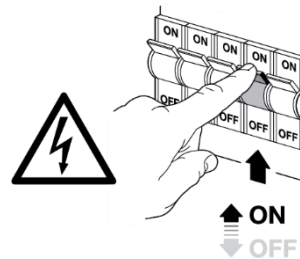
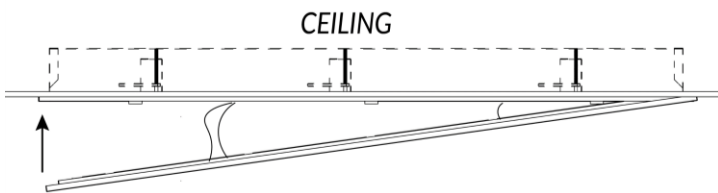
3. Adjust crank brackets gap higher than the ceiling thickness. Make sure crank brackets are retracted and run flush against body position.



4. Lift one end of the luminaire into the cut-out hole and extend two crank brackets to latch to the ceiling while leaving enough clearance for the other end to connect main supply & DALI cable.



5. Push-in the entire luminaire fully and use the Hex key in a clockwise direction to tension the crank bracket against inside the ceiling. Perform this on all six Hex screw to fully secure luminaire to ceiling.
6. Reattach all lanyards to frame, including earth cable. Reattach frame assembly to main body starting at one end and then slowly pushing up other end until magnets pull the frame shut.
7. Turn ON power.



Maintenance:

The supply must be isolated before opening or accessing the luminaire. Product maintenance is critical to the products designed performance. Davis Lighting is not responsible for any product not maintained in accordance with the recommended procedure or intervals. It is recommended that a bi-annual cleaning cycle is implemented. Inspect optical surfaces for damage or crack. Products supplied with visors or covers must not be operate with a damaged visor or cover; it is recommended damaged visors or covers be replaced by a competent person immediately. Seals and electrical components such as wirings to be checked for deterioration.

